



SC Connectors

ONLINE CATALOG

Contents

CLICK ON ANY LINE TO GO DIRECTLY TO THE INDICATED PAGE

| | |
|--|----|
| Navigation Guide | 2 |
| Specifications and interface dimensions. | 3 |
| Design Features | 4 |
| <hr/> | |
| Cable Connectors | |
| Straight Cable Plugs. | 5 |
| Right Angle Cable Plugs. | 5 |
| Receptacles | |
| Panel Jack Receptacles | 6 |
| Panel Plug Receptacles. | 6 |
| Dummy Receptacles | 6 |
| Accessories | |
| Dust Caps. | 6 |
| In-Series Adapters | 7 |
| Technical Information | |
| Mounting Figures. | 8 |
| Cable Groups | 9 |
| Cable Assembly Instructions. | 10 |
| Ordering and Warranty | 11 |

We have configured this online catalog to take advantage of Acrobat navigation shortcuts (links). However, these links are not visible on the pages— making them visible would compromise the page’s readability.

- Clicking on any entry in the Table of Contents will take you to the indicated page.
- Shown below are the “hot spots” on all of the product pages that will take you to background information on various connector characteristics.
- After you use a link to jump to another page, you can use the “back” arrow in Acrobat’s menu bar to return to the page you jumped from.
- Configure Acrobat Reader to show bookmarks for a table of contents by specific characteristic (for example, cable plugs broken out by cable attachment method).
- To find a specific part number, use Acrobat’s search feature.

In addition, the pages are formatted to fit within the margins of standard laser or inkjet printers—no need to use the “shrink to fit” option when printing pages from Acrobat.

Click [here](#) to go to the Table of Contents

Click on the Delta logo on any page to jump to the table of contents.

Click on the page title to jump to specifications and interface dimensions.

BNC Cable Jacks

Panel Jack—Military Clamp for Flexible Cable

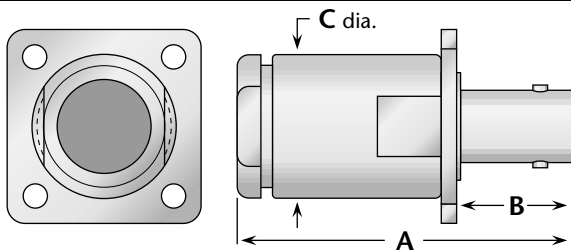


Figure 1

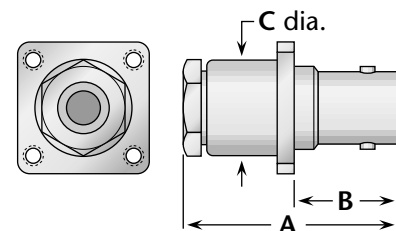


Figure 2

| Cable Group | Fig. | Dimensions | | | Mounting Figure | Plating | | Delta P/N | Assembly Procedure/Trim Code |
|-------------|------|------------|-----|-----|-----------------|---------|---------|---------------|------------------------------|
| | | A | B | C | | Body | Contact | | |
| 1 | 1 | 1.75 | .63 | .75 | 33 | Nickel | Silver | 1011-001-N330 | A/20 |
| 2, 3 | 1 | 1.75 | .63 | .75 | 33 | Nickel | Silver | 1011-004-N330 | A/20 |
| 5, 6 | 2 | 1.16 | .55 | .50 | 07 | Nickel | Silver | UG-291C/U | A/17 |

Click here to jump to dimensions for Delta mounting figures.

Click here to jump to the cable assembly procedure for this connector.

Click here to jump to information on alternate body plating.

Click here to jump to a guide to Delta cable groups.

Click here to go to Delta’s website if your computer is configured for Web connection via Acrobat.

General Description

Delta SC series connectors are medium-size, 50Ω impedance connectors with 1¹/₁₆-24 threaded coupling and good power handling capability, particularly those connectors noted as high-voltage types.

The interface is similar to type C, except with a threaded coupling instead of bayonet. They are best suited for use with cables in the range of .350" to .450" diameter, but are available for other cables from .200" to over 1" diameter.

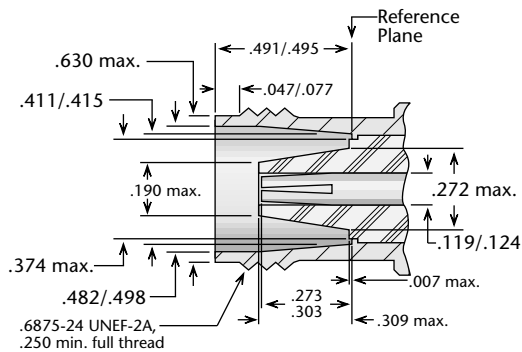
Our extensive line of SC receptacles includes configurations for virtually any packaging requirement, and we can supply any adapter or accessory you need to complete your system design.

As with all other Delta connector series, we welcome your specifications for special configurations.

For adapters between SC and other series, download the document *DeltaABS.pdf* from our website.

SC Specifications*

Jack Interface**



Electrical:

Nominal Impedance: 50 ohms.
Frequency Range: DC–11 GHz (standard);
 DC–2 GHz (high-voltage types).
Voltage Rating: 1,000 volts RMS (standard);
 4,000 volts RMS (high-voltage types).

Dielectric Withstanding

Voltage: 3,000 volts RMS (standard);
 6,000 volts RMS (high-voltage types);
 1,500 volts RMS (when used with RG-142).

Insulation Resistance: 5,000 megohms.

Materials/Finishes:

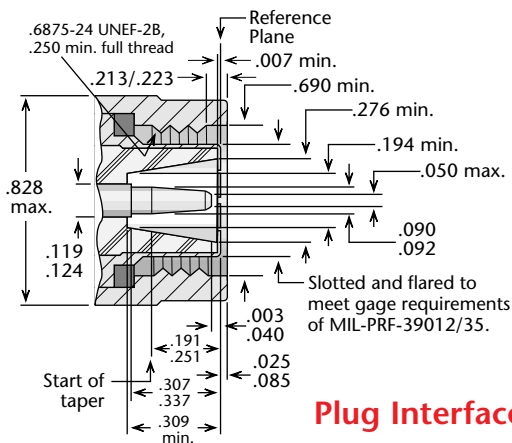
Insulators: Teflon per ASTM D1710.
Male Contacts: Brass per ASTM B16.
Female Contacts: Beryllium Copper per ASTM B196.
Contact Plating: Silver per QQ-S-365, or
 Gold per MIL-G-45204.

Gaskets: Silicone rubber per ZZ-R-765, Class II, Grade 50.

Other Metal Parts: Brass per ASTM B16, plated:
 Silver per QQ-S-365, or
 Nickel per QQ-N-290.

All other specifications are in accordance with the latest issues of MIL-PRF-39012, or MIL-A-55339, or other applicable MIL specifications, and interfaces are in accordance with MIL-STD-348.

*These specifications are typical and may not apply to all connectors. Detailed specifications for individual connectors are available on request.



Plug Interface**

**Some proportions altered to illustrate detail.

About Delta's Customer-Driven Design

At Delta, *Customer-Driven Design* isn't just a catchy slogan. It means that we make RF connectors that help you build your products efficiently, quickly, and cost-effectively. Because we design for *your* needs, nobody else can offer you such a broad line of standard connectors, along with an ever-growing list of innovative, user-friendly design variations like those detailed on these pages.

These featured connector technologies grew out of real-world requirements, and have saved our customers untold hours and dollars over the years. And there are thousands of other special connector designs we've produced that we don't have space to include in this catalog. So if you don't see the exact connector configuration you need, please call us—we may have already made it. If not, we'll work with you to provide the the connectors you need, with the best price/performance balance in the business, and with quality and delivery that will enhance your products and production schedules.

Plating Options for Economy and Performance

(Albaloy or nickel—available for all connector series except SMA)

Silver plating has long been standard on RF connectors with brass bodies, but its high cost and low corrosion resistance make it less than ideal in most applications. Nickel plating is less expensive and more durable than silver, and is standard on many of our connectors.

However, in some applications, nickel plating can introduce unwanted intermodulation distortion, particularly on large size connectors. For these applications, we offer optional Albaloy plating, a tin/zinc/copper composite with a bright white finish, the corrosion resistance of nickel, and the low intermodulation distortion of silver plating.

Albaloy plating has the same composition as, and is fully compatible with, other commercial platings designated Sucoplate[®], IP-23, White Bronze, and Tri-Alloy.

To order a Delta connector with plating other than the listed finish, substitute **A**, **N**, or **Q** in the Delta part number as below:

For **silver** plating: 1111-111-**A**111.

For **nickel** plating: 1111-111-**N**111.

For **Albaloy** plating: 1111-111-**Q**111.

Note: M39012 and M55339 QPL connectors can only be supplied with the specified plating. SMA connectors with stainless-steel bodies are available with gold plating or passivated finish.

Straight Plug—Military Clamp for Flexible Cable

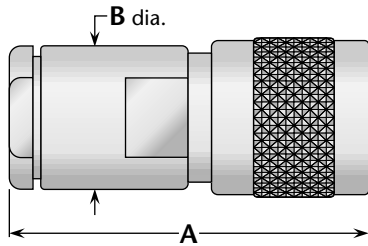


Figure 1

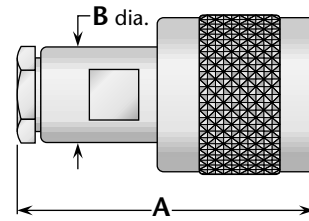


Figure 2

| Cable Group | Figure | Dimensions | | Plating | | Delta P/N | Assembly Procedure/ Trim Code |
|-------------|--------|------------|-----|---------|------------|-----------------|----------------------------------|
| | | A | B | Body | Contact | | |
| 2, 3 | 1 | 1.47 | .75 | Nickel | Silver | 1901-004-N000-1 | A/01 |
| 2, 3 | 1 | 1.78 | .75 | Nickel | Silver | 1901-004-N000* | A/21 |
| 2, 3 | 1 | 1.78 | .75 | Nickel | Silver (C) | 1901-004-N001* | A/28 |
| 5, 6 | 2 | 1.53 | .50 | Nickel | Silver | 1901-015-N000 | A/17 |
| 5, 6 | 2 | 1.53 | .50 | Nickel | Silver (C) | 1901-015-N001 | A/02 |

* High voltage type.

Right Angle Plug—Military Clamp for Flexible Cable

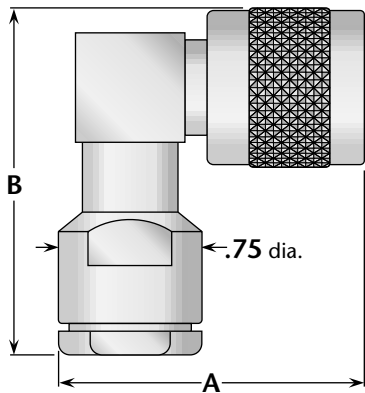


Figure 1

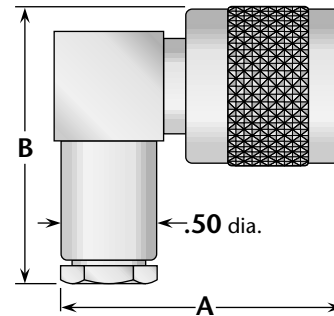


Figure 2

| Cable Group | Figure | Dimensions | | Plating | | Delta P/N | Assembly Procedure/ Trim Code |
|-------------|--------|------------|------|---------|------------|-----------------|----------------------------------|
| | | A | B | Body | Contact | | |
| 2, 3 | 1 | 1.56 | 1.94 | Nickel | Silver (C) | 1904-004-N000* | A/21 |
| 5, 6 | 2 | 1.45 | 1.75 | Nickel | Silver | 1905-015-N001-2 | A/17 |

* High voltage type.

(C) in contact plating column indicates captive contact.

Panel Receptacle—Solder Pot Contact

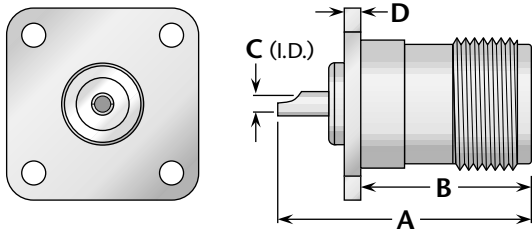


Figure 1
(Panel jack receptacle)

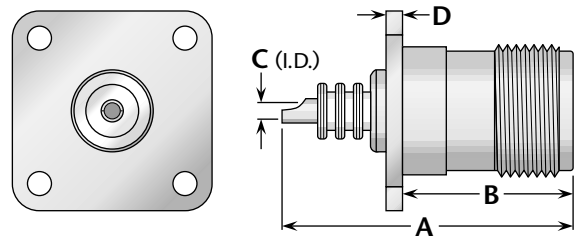


Figure 2
(Panel jack receptacle, high voltage type)

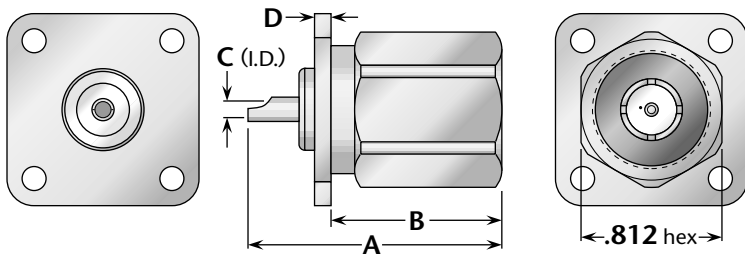


Figure 3
(Panel plug receptacle)

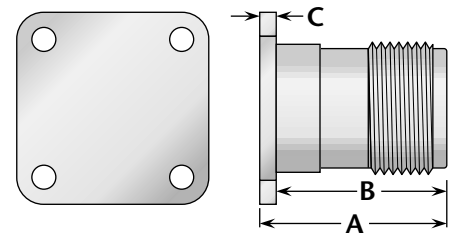


Figure 4
(Dummy receptacle)

| Figure | Dimensions | | | | Mounting Figure | Plating | | Delta P/N |
|--------|------------|-----|------|------|-----------------|---------|------------|-----------------|
| | A | B | C | D | | Body | Contact | |
| 1 | 1.25 | .91 | .106 | .080 | 26 | Nickel | Silver (C) | 1913-000-N261-1 |
| 1 | 1.25 | .91 | .102 | .080 | 33 | Nickel | Gold (C) | 1913-000-N331-2 |
| 2 | 1.50 | .91 | .106 | .080 | 26 | Nickel | Silver (C) | 1913-000-N261-2 |
| 3 | 1.16 | .86 | .102 | .080 | 33 | Nickel | Gold (C) | 1923-000-N331 |
| 4 | .90 | .82 | .080 | — | 33 | Nickel | — | 1963-000-N330 |

Dust Cap

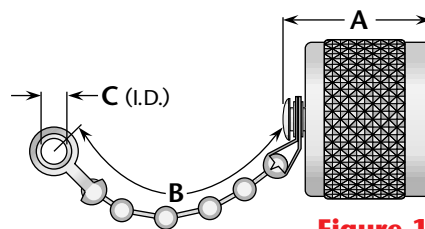
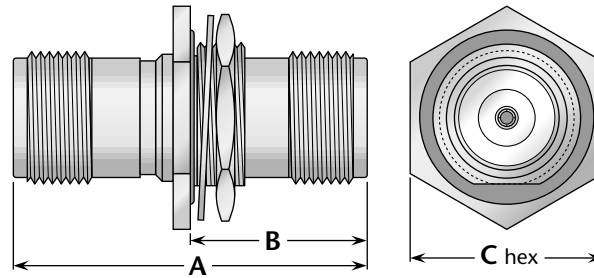


Figure 1

| Figure | Dimensions | | | Features | Plating | | Delta P/N |
|--------|------------|------|------|------------|---------|---------|---------------|
| | A | B | C | | Body | Contact | |
| 1 | .92 | 2.50 | .144 | Bead chain | Nickel | — | 1932-000-N000 |

(C) in contact plating column indicates captive contact.

Bulkhead Jack-Jack Adapter



(Connects two plugs, hermetically sealed)

| Dimensions | | | Max. Panel | Mounting Figure | Plating | | Delta P/N |
|------------|------|------|------------|-----------------|---------|----------|---------------|
| A | B | C | | | Body | Contact | |
| 1.84 | 1.00 | 1.00 | .125 | 51 | Nickel | Gold (C) | 1926-000-N518 |

Straight and Right Angle Adapters

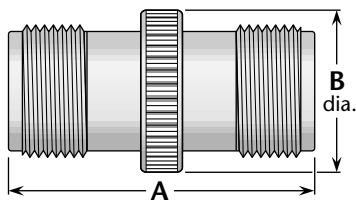


Figure 1
(Straight jack-jack;
connects two plugs)

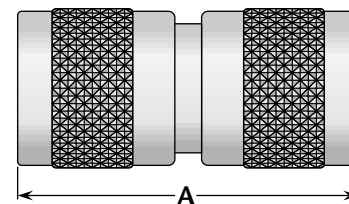


Figure 2
(Straight plug-plug;
connects two jacks)

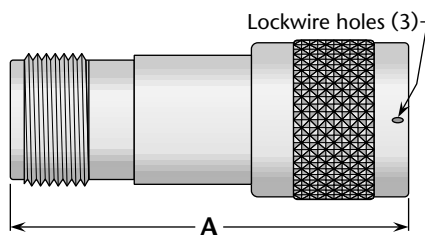


Figure 3
(Straight jack-plug;
connects one plug and one jack)

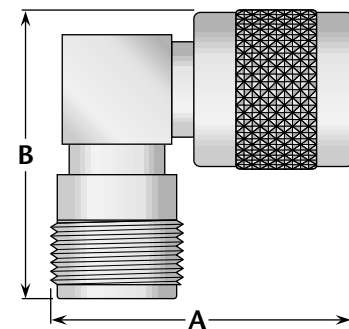
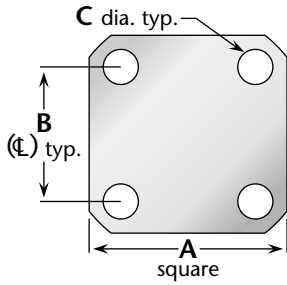


Figure 4
(Right angle jack-plug;
connects one plug and one jack)

| Figure | Dimensions | | Plating | | Delta P/N |
|--------|------------|------|---------|------------|-----------------|
| | A | B | Body | Contact | |
| 1 | 1.64 | .75 | Nickel | Silver (C) | 1928-000-N000 |
| 2 | 1.75 | — | Nickel | Silver (C) | 1927-000-N000 |
| 3 | 2.05 | — | Nickel | Gold (C) | 1934-000-N000-1 |
| 4 | 1.46 | 1.48 | Nickel | Gold (C) | 1935-000-N000-1 |

(C) in contact plating column indicates captive contact.

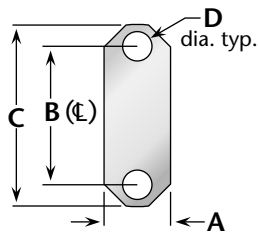
Connector Flanges (Panel mounted connectors)



4-hole flanges

| Figure | A | B | C |
|--------|-------|-------|-----------|
| 04 | 1/2 | .360 | .089 |
| 05 | 1/2 | .340 | .102 |
| 07 | 11/16 | .500 | #3-56 tap |
| 08 | 11/16 | .500 | .136 |
| 09 | 11/16 | .500 | .125 |
| 10 | 11/16 | .500 | .120 |
| 12 | 11/16 | .500 | .109 |
| 18 | 3/4 | .531 | .136 |
| 26 | 1 | .718 | #6-32 tap |
| 27 | 1 | .718 | #4-40 tap |
| 30 | 1 | .718 | .166 |
| 32 | 1 | .718 | .136 |
| 32A | 1 | .718 | .136* |
| 33 | 1 | .718 | .125 |
| 34 | 13/32 | .812 | .150 |
| 36 | 13/16 | .906 | #6-32 tap |
| 39 | 13/16 | .906 | .152 |
| 40 | 13/16 | .906 | .125 |
| 45 | 2 | 1.437 | .257 |
| 91 | .375 | .250 | .067 |
| 91A | .375 | .232 | .093 |

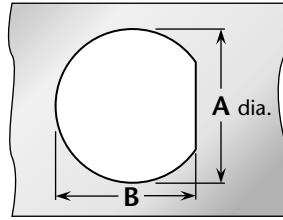
* Countersunk to .245 dia.



2-hole flanges

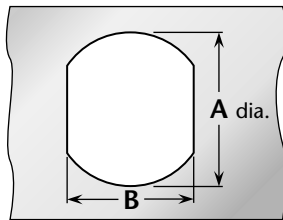
| Figure | A | B | C | D |
|--------|------|-------|------|------|
| 92 | .223 | .481 | .625 | .102 |
| 92A | .260 | .481 | .625 | .102 |
| 95 | .640 | 1.015 | 1.30 | .125 |

Panel Cutouts (Bulkhead mounted connectors)



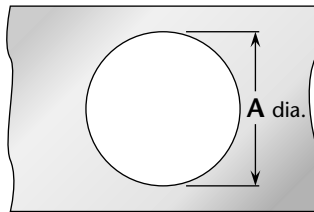
D-Hole

| Figure | A | B |
|--------|------|------|
| 51 | .755 | .723 |
| 54 | .630 | .598 |
| 55 | .630 | .583 |
| 57 | .557 | .531 |
| 59 | .505 | .473 |
| 62 | .442 | .410 |
| 63 | .407 | .362 |
| 65 | .380 | .348 |
| 66 | .319 | .292 |
| 67 | .255 | .236 |
| 68 | .195 | .176 |



Double D-Hole

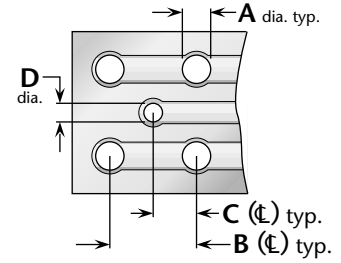
| Figure | A | B |
|--------|------|------|
| 69 | .755 | .692 |
| 72 | .630 | .536 |
| 75 | .380 | .341 |
| 84 | .319 | .278 |



Round Hole

| Figure | A |
|--------|------|
| 82 | .255 |
| 89 | .380 |

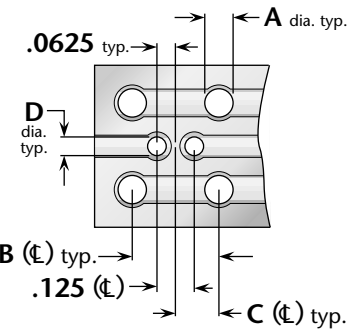
P.C. Board Drilling



(PCB traces are shown for illustrative purpose only, and are not representative of actual circuitry.)

Coaxial connectors

| Figure | A | B | C | D |
|--------|------|------|------|------|
| PCB01 | .067 | .400 | .200 | .045 |
| PCB02 | .045 | .500 | .250 | .045 |
| PCB03 | .067 | .300 | .150 | .035 |
| PCB05 | .067 | .200 | .100 | .055 |
| PCB06 | .067 | .200 | .100 | .045 |
| PCB07 | .045 | .177 | .088 | .045 |
| PCB08 | .032 | .100 | .050 | .032 |



(PCB traces are shown for illustrative purpose only, and are not representative of actual circuitry.)

Twinax connectors

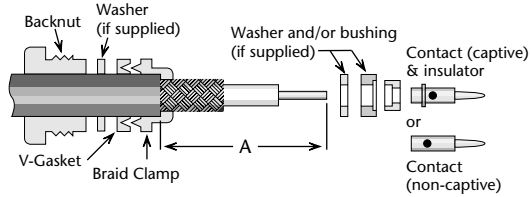
| Figure | A | B | C | D |
|--------|------|------|------|------|
| PCB04 | .045 | .500 | .250 | .045 |

| Cable Group Finder | | | |
|---------------------------|--------------|---------------|--------------|
| Cable | Group | Cable | Group |
| RG-5, 5A, B | 1A | RG-225 | 3C |
| RG-6, 6A | 1B | RG-228A | 20 |
| RG-8, 8A | 2A | RG-302 | 22 |
| RG-9, 9A, B | 3A | RG-303 | 23 |
| RG-10 | 15 | RG-304 | 24 |
| RG-11, 11A | 2B | RG-316 | 9A |
| RG-12 | 15 | RG-316DS | 10 |
| RG-13A | 3B | RG-393 | 4 |
| RG-14A | 16 | RG-400 | 6A |
| RG-17A | 17 | RG-401 | 12 |
| RG-18A | 18 | RG-402 | 13 |
| RG-21, 21A | 1A | RG-405 | 14 |
| RG-22, 22A, B | 28 | M17/2 | 1B |
| RG-55, 55B | 6B | M17/6 | 2B |
| RG-55A | 6A | M17/15 | 28 |
| RG-58, 58A, C | 5 | M17/28 | 5 |
| RG-59, 59A, B | 7A | M17/29 | 7A |
| RG-62, 62A, B, C | 7A | M17/30 | 7A |
| RG-71, 71A, B | 7B | M17/45 | 27 |
| RG-108, 108A | 27 | M17/73 | 1A |
| RG-115A | 19 | M17/162 | 1A |
| RG-118A | 20 | M17/112 | 1C |
| RG-122 | 8A | M17/74 | 2A |
| RG-126 | 21 | M17/75 | 3A |
| RG-141, 141A | 5 | M17/127 | 3C |
| RG-142, 142A | 6A | M17/77 | 3B |
| RG-142B | 6B | M17/60 | 6A |
| RG-143, 143A | 1C | M18/84 | 6A |
| RG-174 | 9A | M17/128 | 6A |
| RG-174DS | 10 | M17/97 | 7A |
| RG-178, 178A, B | 11 | M17/54 | 8A |
| RG-179A, 179B | 9B | M17/95 | 8B |
| RG-180, 180A, B | 8B | M17/137 | 8B |
| RG-187, 187A | 9B | M17/152 | 9A |
| RG-188, 188A | 9A | M17/93 | 11 |
| RG-195 | 8B | M17/129 | 12 |
| RG-196, 196A | 11 | M17/130 | 13 |
| RG-210 | 7A | M17/133 | 14 |
| RG-212 | 1C | M17/78 | 16 |
| RG-213 | 2A | M17/165 | 16 |
| RG-214 | 3A | M17/176 | 30 |
| RG-215 | 15 | AT&T 735A | 31 |
| RG-217 | 16 | Belden 8281 | 26 |
| RG-218 | 17 | Belden 9207 | 29 |
| RG-219 | 18 | Dearborn 6207 | 29 |
| RG-222 | 1C | IBM 7362211 | 29 |
| RG-223 | 6A | | |

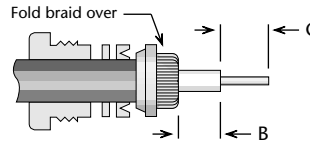
| Delta Cable Groups | |
|---------------------------|--|
| Group | Cables |
| 1 | 1A RG-5, 5A, 5B, 21, 21A; M17/73, /162 |
| | 1B RG-6, 6A; M17/2 |
| | 1C RG-143, 143A, 212, 222; M17/73, /112, /162 |
| 2 | 2A RG-8, 8A, 213; M17/74 |
| | 2B RG-11, 11A; M17/6 |
| 3 | 3A RG-9, 9A, 9B, 214; M17/75 |
| | 3B RG-13A, 216; M17/77 |
| | 3C RG-225; M17/127 |
| 4 | RG-393; M17/127 |
| 5 | RG-58, 58A, 58C, 141, 141A; M17/28, /111 |
| 6 | 6A RG-55A, 142, 142A, 223, 400; M17/60, /84, /128 |
| | 6B RG-55, 55B, 142B; M17/60, /84 |
| 7 | 7A RG-59, 59A, 59B, 62, 62A, 62B, 62C, 210; M17/29, /30, /97 |
| | 7B RG-71, 71A, 71B; M17/90 |
| 8 | 8A RG-122; M17/54 |
| | 8B RG-180, 180A, 180B, 195; M17/95, /137 |
| 9 | 9A RG-174, 188, 188A, 316; M17/152 |
| | 9B RG-179A, 179B, 187, 187A; M17/94, /136 |
| 10 | Double-Shielded RG-174, 316; M17/152 |
| 11 | RG-178, 178A, 178B, 196, 196A; M17/93 |
| 12 | .250" semi-rigid; RG-401; M17/129 |
| 13 | .141" semi-rigid; RG-402; M17/130 |
| 14 | .085" semi-rigid; RG-405; M17/133 |
| 15 | RG-10, 12, 215; M17/6, /74 |
| 16 | RG-14A, 217; M17/78, /165 |
| 17 | RG-17A, 218 |
| 18 | RG-18A, 219 |
| 19 | RG-115A |
| 20 | RG-118A, 228A |
| 21 | RG-126 |
| 22 | RG-302 |
| 23 | RG-303 |
| 24 | RG-304 |
| 25 | Special 8X cable; contact factory for details. |
| 26 | Belden 8281 |
| 27 | RG-108, 108A; M17/45 |
| 28 | RG-22, 22A, 22B; M17/15 |
| 29 | Belden 9207; Dearborn 6207; IBM 7362211 |
| 30 | M17/176 |
| 31 | AT&T 735A |

Assembly Procedure A

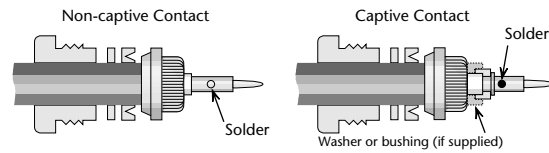
- 1)** Trim cable jacket to dimension A. Slide backnut, washer, V-gasket, and braid clamp onto cable as shown. Cable jacket should bottom on step in braid clamp.



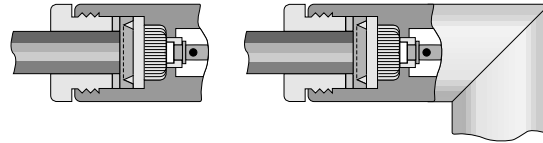
- 2)** Comb braid wires out straight and fold back over front shoulder of braid clamp (braid wires should not overlap one another after folding). Trim braid wires flush with step of braid clamp. Trim cable dielectric and center conductor to dimensions B and C.



- 3)** If support insulator is provided for RG-62 or 71 cable, insert into hollow in dielectric. Assemble rear bushing or washer (if supplied), rear insulator (if captive contact) and contact, and solder contact to center conductor. Rear of contact should be flush with cable dielectric end. For right angle connectors with access cap, omit this step entirely.



- 4)** Insert prepared cable and hardware into body and tighten backnut. For right angle connectors with access cap, solder center conductor into slot in contact and tighten access cap.



Trim Codes For Assembly Procedure A

| Code | A | B | C | Code | A | B | C |
|------|--------------|--------------|--------------|------|--------------|--------------|--------------|
| A/01 | .375 (3/8) | .047 (3/64) | .203 (13/64) | A/20 | .375 (3/8) | .047 (3/64) | .172 (11/64) |
| A/02 | .375 (3/8) | .109 (7/64) | .203 (13/64) | A/21 | .500 (1/2) | .313 (5/16) | .172 (11/64) |
| A/03 | .438 (7/16) | .250 (1/4) | .188 (3/16) | A/22 | .375 (3/8) | .188 (3/16) | .141 (9/64) |
| A/04 | .281 (9/32) | .047 (3/64) | .125 (1/8) | A/23 | .438 (7/16) | .078 (5/64) | .172 (11/64) |
| A/05 | .313 (5/16) | .125 (1/8) | .109 (7/64) | A/24 | .500 (1/2) | .094 (3/32) | .141 (9/64) |
| A/06 | .594 (19/32) | .391 (25/64) | .156 (5/32) | A/25 | .438 (7/16) | .141 (9/64) | .172 (11/64) |
| A/07 | .375 (3/8) | .047 (3/64) | .125 (1/8) | A/26 | .625 (5/8) | .281 (9/32) | .250 (1/4) |
| A/08 | .281 (9/32) | .109 (7/64) | .094 (3/32) | A/27 | .688 (11/16) | .281 (9/32) | .125 (1/8) |
| A/09 | .344 (11/32) | .109 (7/64) | .094 (3/32) | A/28 | .656 (21/32) | .297 (19/64) | .250 (1/4) |
| A/10 | .406 (13/32) | .109 (7/64) | .203 (13/64) | A/29 | .688 (11/16) | .125 (1/8) | .313 (5/16) |
| A/11 | .500 (1/2) | .281 (9/32) | .156 (5/32) | A/30 | .688 (11/16) | .469 (15/32) | .156 (5/32) |
| A/12 | .343 | .040 | .219 | A/31 | .700 (21/32) | .453 (29/64) | .250 (1/4) |
| A/13 | .375 (3/8) | .125 (1/8) | .156 (5/32) | A/32 | .313 (5/16) | .078 (5/64) | .188 (3/16) |
| A/14 | .355 | .090 | .188 (3/16) | A/33 | .250 (1/4) | .078 (5/64) | .094 (3/32) |
| A/15 | .425 | .094 (3/32) | .259 | A/34 | .250 (1/4) | .062 (1/16) | .109 (7/64) |
| A/16 | .328 (21/64) | .094 (3/32) | .188 (3/16) | A/35 | .837 | .575 | .150 |
| A/17 | .375 (3/8) | .109 (7/64) | .125 (1/8) | A/36 | .450 | .250 | .150 |
| A/18 | .375 (3/8) | .062 (1/16) | .172 (11/64) | A/37 | .281 | .038 | .188 |
| A/19 | .375 (3/8) | .188 (3/16) | .094 (3/32) | A/38 | .281 | .069 | .156 |



Warranty

We warrant our parts to be free from defects in materials and workmanship for one year from date of purchase. During that time, we will repair or replace (at our option) any parts found to be defective.

This warranty does not apply to parts which have been modified, used in conditions exceeding Delta or military specifications, or disassembled. We will not, under any circumstances, be responsible for consequential or incidental damages or installation costs.

No other warranties apply, and no other liability may be assumed or extended by representatives or distributors.

Returns

Returns will be accepted only with a Return Authorization number issued by Delta, and are subject to inspection and acceptance upon arrival. Restocking charges will be determined prior to issuance of Return Authorization.

All claims for shortages must be made within 30 days of receipt by customer.

Ordering Information

Orders are subject to the terms and conditions on our order acknowledgement, which may only be modified by written agreement prior to sale. Order changes, cancellation, or termination will be accepted only with written approval from Delta Electronics Manufacturing.

Copyright, Trademarks, and Patents

Entire contents copyright 2003, Delta Electronics Manufacturing Corporation. Reproduction rights are hereby granted for, and specifically limited to, printing or other reproduction of drawings and specifications for inclusion in specification or source control drawings, or for purchasing procedures, by Delta customers only.

Heli-Grip, *PressMount*, and the New England Craftsmanship logo are trademarks. The Heli-Grip design is covered by U.S. and foreign patents.

Delta Electronics Manufacturing Corporation
416 Cabot Street, P.O. Box 53
Beverly, MA 01915
FSCM/CAGE 00795

Catalog # SCpdf 1.2 (7/09)