



BMA Series Subminiature RF Connectors

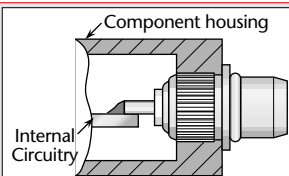
General Description

Delta BMA series plugs are compact, high-performance connectors that mate with all standard BMA series jacks.

Designed to meet all applicable MIL-PRF-39012 requirements, they offer good electrical performance up to 22 GHz. These connectors are ideal for use in rack-and-panel applications.

Current configurations include PressMount plug receptacles and two- and four-hole flange panel plugs with post contacts. New types are being added to our product line, so please call with your requirements for other BMA configurations.

PressMount Plug Receptacle



Delta PressMount Receptacles

These connectors eliminate the need for complicated mounting hole patterns and mounting hardware.

They are simply pressed into a single through hole, and the precisely-engineered knurled mounting section provides retention strength far greater than normal mating and unmating forces. An integral shoulder provides a positive stop when mounting.

Figure 1 (Brass body)

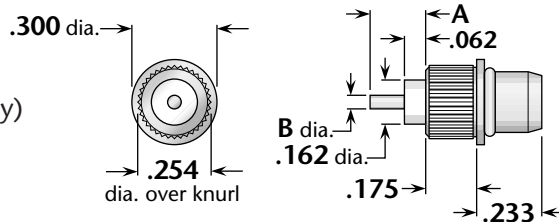


Figure	Dimensions		Min. Panel	Mounting Hole	Plating		Delta P/N
	A	B			Body	Contact	
1	.187	.050	.100	.250 ±.001 dia.	Nickel	Gold (C)	4259-000-N911-2

Panel Plug Receptacles

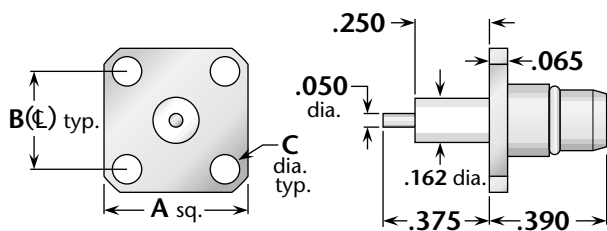


Figure 1 (Stainless steel body)

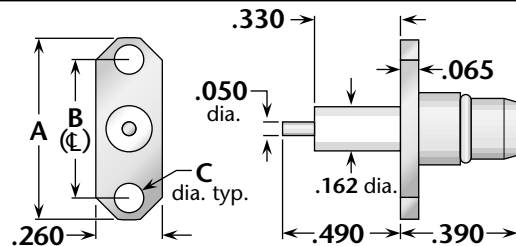


Figure 2 (Stainless steel body)

Figure	Dimensions			Mounting Figure	Plating		Delta P/N
	A	B	C		Body	Contact	
1	.500	.340	.102	05	Passivated	Gold (C)	4259-000-K051
2	.625	.481	.102	92A	Passivated	Gold (C)	4259-000-K911-5

(C) in contact plating column indicates captive contact. • Contact factory for specifications and interface dimensions.