

# 600-6

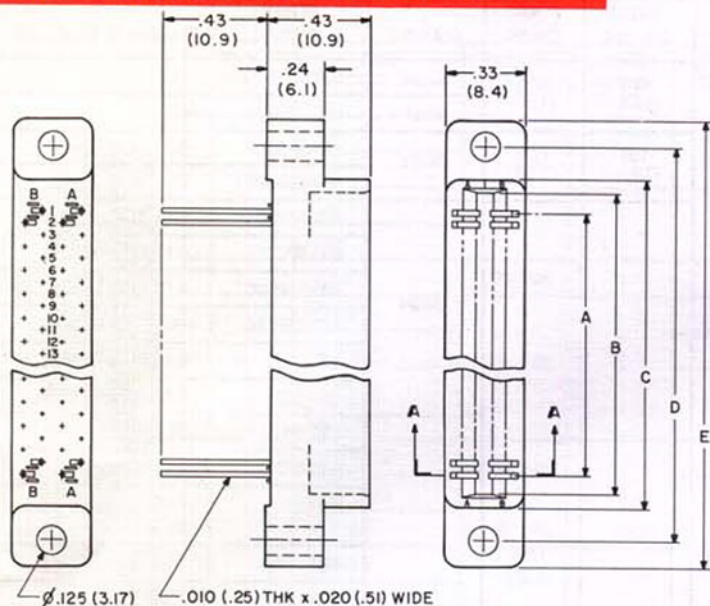
## CARDEGE CONNECTORS

### DUAL READOUT, BELLOW FORM CONTACTS

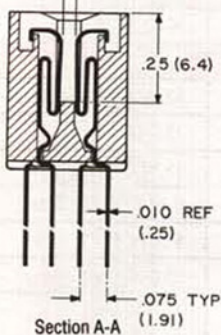
**.050" (1.27 MM) CONTACT SPACING**

**\*FOR 1/16(1.6) PRINTED CIRCUIT BOARD  
20,28,44,80,100,110,128,132 CONTACTS**

**\*-Available for 1/32(.79) Board**



ACCEPTS .054 - .071 THK P.C. BOARD



NO. OF DUAL CONTACTS	DIMENSIONS				
	A	B	C	D	E
10/10	.450 (11.43)	.625 (15.88)	.72 (18.3)	1.000 (25.40)	1.22 (31.0)
14/14	.650 (16.51)	.825 (20.96)	.92 (23.4)	1.200 (30.48)	1.42 (36.1)
22/22	1.050 (26.67)	1.225 (31.11)	1.32 (33.5)	1.600 (40.64)	1.82 (46.2)
40/40	1.950 (49.53)	2.125 (53.98)	2.22 (56.4)	2.500 (63.50)	2.72 (69.1)
50/50	2.450 (62.23)	2.625 (66.68)	2.72 (69.1)	3.000 (76.20)	3.22 (81.8)
55/55	2.700 (68.58)	2.875 (73.03)	2.97 (75.4)	3.250 (82.55)	3.47 (88.1)
64/64	3.150 (80.01)	3.325 (84.46)	3.42 (86.9)	3.700 (93.98)	3.92 (99.6)
66/66	3.250 (82.55)	3.425 (87.00)	3.52 (89.4)	3.800 (96.52)	4.02 (102.1)

### PERFORMANCE CHARACTERISTICS

#### Voltagess, breakdown (volts rms, 60Hz):

At sea level: 1,350.  
At 70,000 feet: 450.

#### Voltagess, test (volts rms, 60Hz):

At sea level: 900.  
At 70,000 feet: 300.

#### Current rating: 3 amperes max. per contact.

#### Contact resistance (at 1 ampere): 30 MV max.

#### Minimum creepage between contacts: .025"(.64mm).

#### Minimum air space between contacts: .025"(.64mm).

#### Board insertion force, opposing contacts:

8 oz. max. using 0.070"(1.78mm) steel blade.

#### Board separation force, opposing contacts:

.5 oz. min. using 0.054"(1.37mm) steel blade.

#### Terminations: For soldering, welding, or conductive adhesives.

### MATERIAL AND FINISHES

#### Molded inserts (standard): Diallyl phthalate, per MIL-M-14, type SDG.

Optional material: Flame retardant diallyl phthalate, per MIL-M-14, type SDG-F (ordering code: DGF).

#### Contacts: Beryllium copper, per QQ-C-533.

#### Contact finishes: Gold plate, per MIL-G-45204. Thicknesses:

0.000015"(0.4 micron)  
30 - 0.000030"(0.8 microns)  
50 - 0.000050"(1.3 microns) - Class 1. (MIL-SPEC approved)  
Other finishes on request.

### PART NUMBER NOMENCLATURE

1	2	3	4
600-6PC	- 40	DGF	-

- Series: 600-6PC.
- Number of dual contacts:  
10, 14, 22, 40, 50, 55, 64, 66
- Alternate body material: DGF.  
(Standard material is otherwise supplied)
- Optional gold thickness: 30, 50.  
(0.000015", 0.4 micron, is otherwise supplied).



**600-6PC40**  
40 Dual Contacts  
80 Terminals



**600-6PC64**  
64 Dual Contacts  
128 Terminals