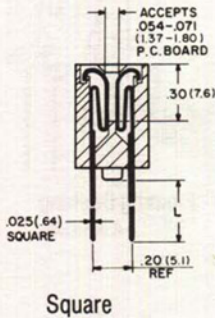
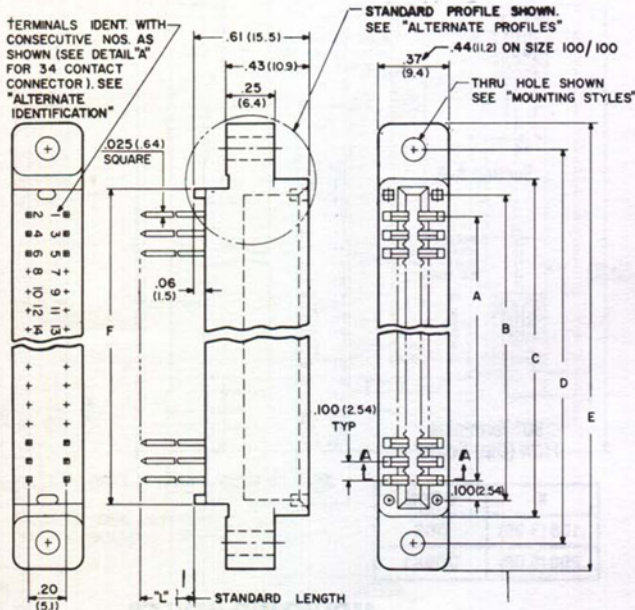


# 6100-200

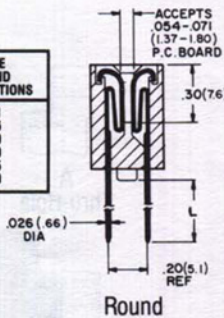
## CARD EDGE CONNECTORS DUAL READOUT

Series 6100-200 is described more comprehensively in our "6100-200" brochure

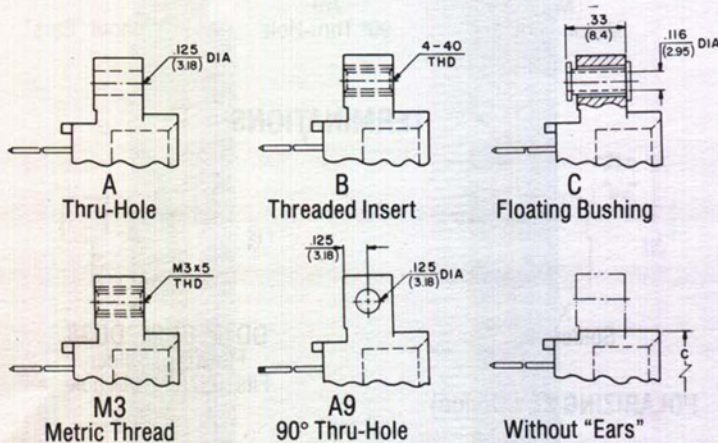


### TERMINATIONS

"L"*	CODE SQUARE TERMINATIONS	CODE ROUND TERMINATIONS
.11 (2.8)	W11	D11
.16 (4.1)	W16	D16
.20 (5.1)	W20	D20
.30 (7.6)	W30	D30
.45 (11.4)	W45	D45
.60 (15.2)	W	D60



### MOUNTING STYLES



### OTHER OPTIONS

Alternate molding profiles (flush mounting; without standoffs), alternate contact identification, 90° terminations (square and round), alternate contact finishes, between contact polarizing keys.

# .100" (2.54 MM) CONTACT SPACING

## FOR 1/16(1.6) PRINTED CIRCUIT BOARD

### .025 (.64) SQ. OR .026 (.66) RND. TERMN.

### 12 THRU 200 CONTACTS

NO. OF CONTACTS	DIMENSIONS					
	A	B	C	D	E	F
6/6	.500 (12.70)	.700 (17.78)	.860 (21.84)	1.175 (29.85)	1.435 (36.45)	.750 (19.05)
10/10	.900 (22.86)	1.100 (27.94)	1.260 (32.00)	1.575 (40.01)	1.835 (46.61)	1.150 (29.21)
15/15	1.400 (35.56)	1.600 (40.64)	1.760 (44.70)	2.075 (52.71)	2.335 (59.31)	1.650 (41.91)
17/17	1.600 (40.64)	1.820 (46.23)	1.970 (50.04)	2.240 (56.90)	2.500 (63.50)	1.840 (46.74)
18/18	1.700 (43.18)	1.900 (48.26)	2.060 (52.32)	2.375 (60.33)	2.635 (66.93)	1.950 (49.53)
20/20	1.900 (48.26)	2.100 (53.34)	2.260 (57.40)	2.575 (65.41)	2.835 (72.01)	2.150 (54.61)
*22/22	2.100 (53.34)	2.300 (58.42)	2.460 (62.48)	2.775 (70.49)	3.035 (77.09)	2.350 (59.69)
24/24	2.300 (58.42)	2.500 (63.50)	2.660 (67.56)	2.975 (75.57)	3.235 (82.17)	2.550 (64.77)
25/25	2.400 (60.96)	2.600 (66.04)	2.760 (70.10)	3.075 (78.11)	3.335 (84.71)	2.650 (67.31)
26/26	2.500 (63.50)	2.700 (68.58)	2.900 (73.66)	3.200 (81.28)	3.500 (88.90)	2.775 (70.49)
28/28	2.700 (68.58)	2.900 (73.66)	3.060 (77.72)	3.375 (85.73)	3.635 (92.33)	2.950 (74.93)
30/30	2.900 (73.66)	3.100 (78.74)	3.260 (82.80)	3.575 (90.81)	3.835 (97.41)	3.150 (80.01)
35/35	3.400 (86.36)	3.600 (91.44)	3.760 (95.50)	4.075 (103.51)	4.335 (110.11)	3.650 (92.71)
*36/36	3.500 (88.90)	3.700 (93.98)	3.860 (98.04)	4.175 (106.05)	4.435 (112.65)	3.750 (95.25)
40/40	3.900 (99.06)	4.100 (104.14)	4.260 (108.20)	4.575 (116.21)	4.835 (122.81)	4.150 (105.41)
*43/43	4.200 (106.68)	4.400 (111.76)	4.560 (115.82)	4.875 (123.83)	5.135 (130.43)	4.450 (113.03)
44/44	4.300 (109.22)	4.500 (114.30)	4.660 (118.36)	4.975 (126.37)	5.235 (132.97)	4.550 (115.57)
48/48	4.700 (119.38)	4.900 (124.46)	5.150 (130.81)	5.450 (138.43)	5.710 (145.03)	5.130 (130.30)
*50/50	4.900 (124.46)	5.100 (129.54)	5.260 (133.60)	5.575 (141.61)	5.835 (148.21)	5.150 (130.81)
60/60	5.900 (149.86)	6.100 (154.94)	6.260 (159.00)	6.575 (167.01)	6.835 (173.61)	6.150 (156.21)
61/61	6.000 (152.40)	6.200 (157.48)	6.360 (161.54)	6.675 (169.55)	6.940 (176.28)	6.250 (158.75)
65/65	6.400 (162.56)	6.600 (167.64)	6.760 (171.70)	7.075 (179.71)	7.335 (186.31)	6.650 (168.91)
70/70	6.900 (175.26)	7.100 (180.34)	7.260 (184.40)	7.575 (192.41)	7.835 (199.01)	7.150 (181.61)
75/75	7.400 (187.96)	7.600 (193.04)	7.760 (197.10)	8.075 (205.11)	8.335 (211.71)	7.650 (194.31)
100/100	9.900 (251.46)	10.100 (256.54)	10.260 (260.60)	10.575 (268.61)	10.835 (275.21)	10.150 (257.81)

\*THESE CONNECTORS ARE AVAILABLE IN THE FOLLOWING ALTERNATE LENGTHS. ORDER BY ADDING PREFIX "R" TO P/N. EXAMPLE: R6100-200-72WA.

22/22	2.100 (53.34)	2.300 (58.42)	2.550 (64.77)	2.850 (72.39)	3.110 (78.99)	2.350 (59.69)
36/36	3.500 (88.90)	3.700 (93.98)	3.950 (100.33)	4.250 (107.95)	4.550 (115.57)	3.930 (99.82)
43/43	4.200 (106.68)	4.400 (111.76)	4.650 (118.11)	4.950 (125.73)	5.250 (133.35)	4.630 (117.60)
50/50	4.900 (124.46)	5.100 (129.54)	5.350 (135.89)	5.650 (143.51)	5.950 (151.13)	5.330 (135.38)

### MATERIALS AND FINISHES

**Molded inserts:** Phenolic molding compound, per MIL-M-14, type MFH. Optional material: Diallyl phthalate, per MIL-M-14, type GDI-30F.

**Contacts:** Phosphor bronze, per QQ-B-750.

**Contact finishes:** Gold plate, per MIL-G-45204. Thicknesses:  
 0.000015" (0.4 micron).  
 30 - 0.000030" (0.8 micron) - Class 0.  
 50 - 0.000050" (1.3 microns) - Class 1. (MIL-SPEC approved)  
 Other finishes on request.

### PERFORMANCE CHARACTERISTICS

**Voltages, breakdown** (volts rms, 60Hz):  
 At sea level: 2,000; At 70,000 feet: 500.

**Voltages, test** (volts rms, 60Hz):  
 At sea level: 1,500; At 70,000 feet: 375.

**Current rating:** 3 amperes max. per contact.

### PART NUMBER NOMENCLATURE

1	2	3	4	5	6
6100-200	-	100	W20	A	GDF - 50

- Series: 6100-200.
- Number of contacts: 12 thru 200.
- Termination: W11, W16, W20, W30, W45, W, D11, D16, D20, D30, D45, D60.
- Mounting style: A, B, C, M3, A9. (Without "ears" is otherwise supplied).
- Optional diallyl phthalate molding: GDF. (Phenolic is otherwise supplied).
- Optional gold thickness: 30, 50. (0.000015", 0.4 micron, is otherwise supplied).