

**.125" (3.18 MM) CONTACT SPACING  
FOR 1/16(1.6) PRINTED CIRCUIT BOARD  
.025 (.64) SQ. OR .026 (.66) RND. TERMN.  
12 THRU 200 CONTACTS**

**6125-250**

**CARDEGE CONNECTORS  
DUAL READOUT**

Series 6125-250 is described more comprehensively in our "6125" brochure

NO. OF CONTACTS	DIMENSIONS					
	A	B	C	D	E	F
6/6	.625 (15.90)	.875 (22.23)	1.035 (26.29)	1.295 (32.89)	1.555 (39.50)	.875 (22.23)
10/10	1.125 (28.58)	1.375 (34.93)	1.535 (38.99)	1.795 (45.59)	2.055 (52.20)	1.375 (34.93)
15/15	1.750 (44.45)	2.000 (50.80)	2.160 (54.86)	2.420 (61.47)	2.680 (68.07)	2.000 (50.80)
18/18	2.125 (53.98)	2.375 (60.33)	2.535 (64.39)	2.795 (70.99)	3.055 (77.60)	2.375 (60.33)
20/20	2.375 (60.33)	2.625 (66.68)	2.785 (70.74)	3.045 (77.34)	3.305 (83.95)	2.625 (66.68)
22/22	2.625 (66.68)	2.875 (73.03)	3.035 (77.09)	3.295 (83.69)	3.555 (90.30)	2.875 (73.03)
25/25	3.000 (76.20)	3.250 (82.55)	3.410 (86.61)	3.670 (93.22)	3.930 (99.82)	3.250 (82.55)
28/28	3.375 (85.73)	3.625 (92.08)	3.785 (96.14)	4.045 (102.74)	4.305 (109.35)	3.625 (92.08)
30/30	3.625 (92.08)	3.875 (98.43)	4.035 (102.49)	4.295 (109.09)	4.555 (115.70)	3.875 (98.43)
31/31	3.750 (95.25)	4.000 (101.60)	4.160 (105.66)	4.420 (112.27)	4.680 (118.87)	4.000 (101.60)
35/35	4.250 (107.95)	4.500 (114.30)	4.660 (118.36)	4.920 (124.97)	5.180 (131.57)	4.500 (114.30)
36/36	4.375 (111.13)	4.625 (117.48)	4.785 (121.54)	5.045 (128.14)	5.305 (134.75)	4.625 (117.48)
40/40	4.875 (123.83)	5.125 (130.18)	5.285 (134.24)	5.545 (140.84)	5.805 (147.45)	5.125 (130.18)
43/43	5.250 (133.35)	5.500 (139.70)	5.660 (143.76)	5.920 (150.37)	6.180 (156.97)	5.500 (139.70)
44/44	5.375 (136.53)	5.625 (142.88)	5.785 (146.94)	6.045 (153.54)	6.305 (160.15)	5.625 (142.88)
49/49	6.000 (152.40)	6.250 (158.75)	6.410 (162.81)	6.670 (169.42)	6.930 (176.02)	6.250 (158.75)
50/50	6.125 (155.58)	6.375 (161.93)	6.535 (165.99)	6.795 (172.59)	7.055 (179.20)	6.375 (161.93)
57/57	7.000 (177.80)	7.250 (184.15)	7.410 (188.21)	7.670 (194.82)	7.930 (201.42)	7.250 (184.15)
60/60	7.375 (187.33)	7.625 (193.68)	7.785 (197.74)	8.045 (204.34)	8.305 (210.95)	7.625 (193.68)
65/65	8.000 (203.20)	8.250 (209.55)	8.410 (213.61)	8.670 (220.22)	8.930 (226.82)	8.250 (209.55)
75/75	9.250 (234.95)	9.500 (241.30)	9.660 (245.36)	9.920 (251.97)	10.180 (258.57)	9.500 (241.30)
80/80	9.875 (250.83)	10.125 (257.18)	10.285 (261.24)	10.545 (267.84)	10.805 (274.45)	10.125 (257.18)
100/100	12.375 (314.33)	12.625 (320.68)	12.785 (324.74)	13.045 (331.34)	13.305 (337.95)	12.625 (320.68)

**MATERIALS AND FINISHES**

- Molded inserts:** Phenolic molding compound, per MIL-M-14, type MFH. Optional material: Diallyl phthalate, per MIL-M-14, type GDI-30F.
- Contacts:** Phosphor bronze, per QQ-B-750.
- Contact finishes:** Gold plate, per MIL-G-45204. Thicknesses:
  - 0.000015" (0.4 micron).
  - 30 - 0.000030" (0.8 micron) - Class 0.
  - 50 - 0.000050" (1.3 microns) - Class 1. (MIL-SPEC approved)
 Other finishes on request.

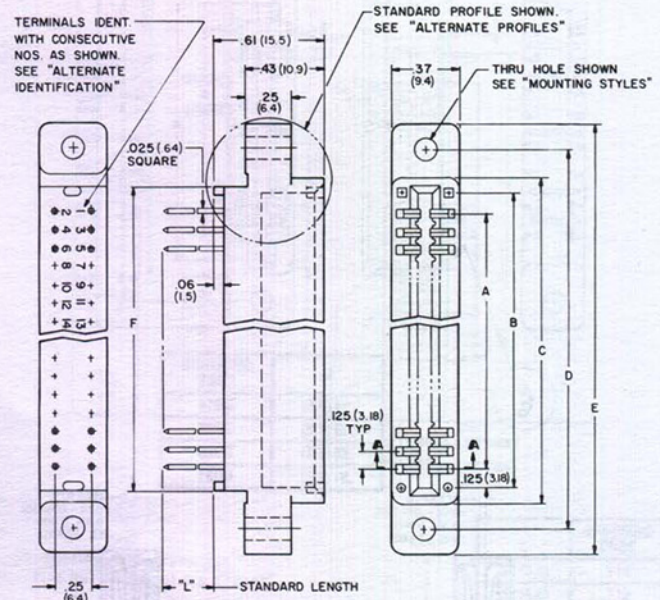
**PERFORMANCE CHARACTERISTICS**

- Voltages, breakdown (volts rms, 60Hz):** At sea level: 2,400; At 70,000 feet: 600.
- Voltages, test (volts rms, 60Hz):** At sea level: 1,800; At 70,000 feet: 450.
- Current rating:** 3 amperes max. per contact.

**PART NUMBER NOMENCLATURE**

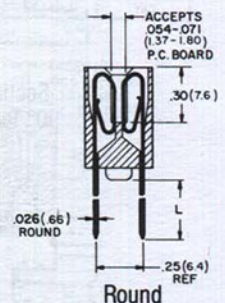
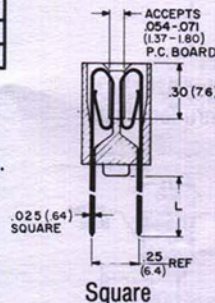
1	2	3	4	5	6
6125-250	-	100	W20	A	-

- Series: **6125-250**.
- Number of contacts: **12 thru 200**.
- Termination: **W11, W16, W20, W30, W45, W, D11, D16, D20, D30, D45, D60**.
- Mounting style: **A, B, C, M3, A9**. (Without "ears" is otherwise supplied).
- Optional diallyl phthalate molding: **GDF**. (Phenolic is otherwise supplied).
- Optional gold thickness: **30, 50**. (0.000015", 0.4 micron, is otherwise supplied).

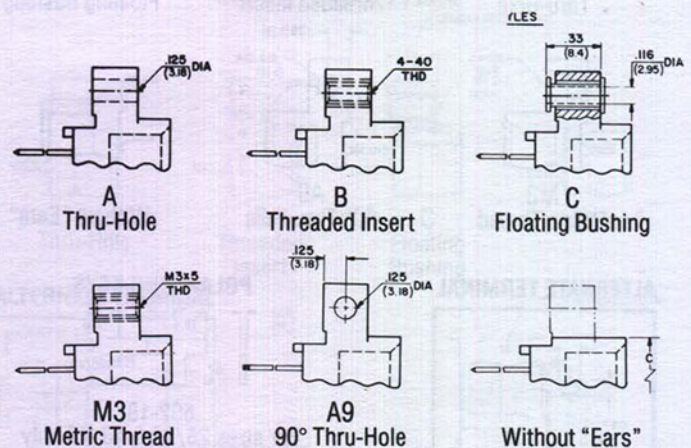


**TERMINATIONS**

"L"*	CODE SQUARE TERMINATIONS	CODE ROUND TERMINATIONS
.11 (2.8)	W11	D11
.16 (4.1)	W16	D16
.20 (5.1)	W20	D20
.30 (7.6)	W30	D30
.45 (11.4)	W45	D45
.60 (15.2)	W	D60



**MOUNTING STYLES**



**OTHER OPTIONS**

Alternate molding profiles (flush mounting; without standoffs), alternate contact identification, 90° terminations (square and round), open-ended card slot (Series M6125-250), alternate contact finishes, between contact polarizing keys.