

.156" (3.96 MM) CONTACT SPACING FOR 1/16(1.6) PRINTED CIRCUIT BOARD 12, 20, 30, 36, 44, 56, 86 CONTACTS

Q6156-140

CARDEDGE CONNECTORS
DUAL READOUT

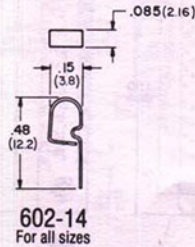
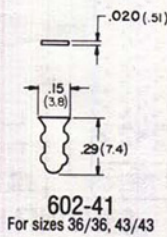
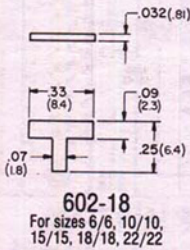
Series Q6156-140 is described more comprehensively in our "Q6156-140" brochure

NO. OF CONTACTS	DIMENSIONS						
	A	B	C REF	D	E REF	F REF	G REF
6/6	.780 (19.81)	1.078 (27.38)	1.218 (30.94)	1.531 (38.89)	1.860 (47.24)	.328 (8.33)	.219 (5.56)
10/10	1.404 (35.66)	1.703 (43.26)	1.843 (46.81)	2.156 (54.76)	2.485 (63.12)	.328 (8.33)	.219 (5.56)
15/15	2.184 (55.47)	2.484 (63.09)	2.624 (66.65)	2.937 (74.60)	3.266 (82.96)	.328 (8.33)	.219 (5.56)
18/18	2.652 (67.36)	2.953 (75.01)	3.093 (78.56)	3.406 (86.51)	3.735 (94.87)	.328 (8.33)	.250 (6.35)
22/22	3.276 (83.21)	3.578 (90.88)	3.717 (94.41)	4.031 (102.39)	4.360 (110.74)	.328 (8.33)	.219 (5.56)
36/36	5.460 (138.68)	5.766 (146.46)	5.906 (150.01)	6.219 (157.96)	6.649 (164.31)	.438 (11.13)	.219 (5.56)
43/43	6.552 (166.42)	6.802 (172.77)	7.000 (177.80)	7.302 (185.47)	7.600 (193.04)	.438 (11.13)	.219 (5.56)

POLARIZING KEYS

Between-Contact Position

In-Contact Position



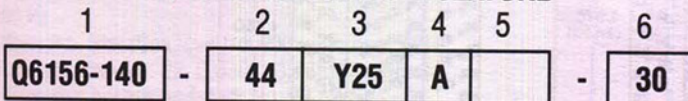
MATERIALS AND FINISHES

Molded inserts: Phenolic molding compound, per MIL-M-14, type MFH.
Optional material: Diallyl phthalate, per MIL-M-14, type GDI-30F.
Contacts: Phosphor bronze, per QQ-B-750.
Contact finishes: Gold plate, per MIL-G-45204. Thicknesses:
0 - 0.000015" (0.4 micron).
30 - 0.000030" (0.8 micron) - Class 0.
50 - 0.000050" (1.3 microns) - Class 1. (MIL-SPEC approved)
Other finishes on request.

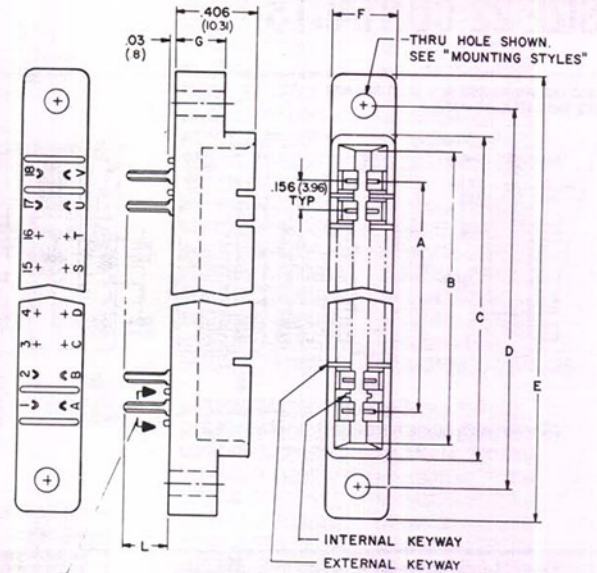
PERFORMANCE CHARACTERISTICS

Voltages, breakdown (volts rms, 60Hz):
At sea level: 2,300; At 70,000 feet: 550.
Voltages, test (volts rms, 60Hz):
At sea level: 1,700; At 70,000 feet: 400.
Current rating: 5 amperes max. per contact.

PART NUMBER NOMENCLATURE

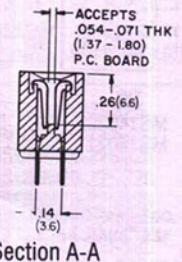
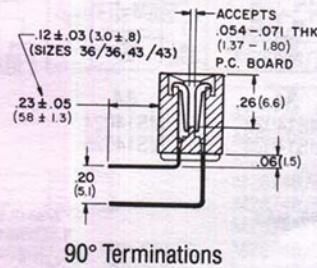


- Series: Q6156-140.
- Number of contacts: 12 thru 86.
- Termination: X, Y14, Y19, Y25, Y41.
- Mounting style: A, B, C, A9.
(Without "ears" is otherwise supplied).
- Optional diallyl phthalate molding: GDF.
(Phenolic is otherwise supplied).
- Optional gold thickness: 30, 50.
(0.000015", 0.4 micron, is otherwise supplied).

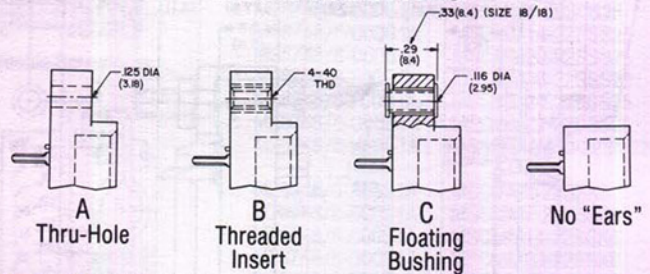


SECTION THRU TERMINAL
FITS INTO .051(1.30) DIA EYELET

L	ORDERING CODE
.14 (3.6)	Y14
.19 (4.8)	Y19
.25 (6.4)	Y25
.41 (10.4)	Y41



MOUNTING STYLES



ALTERNATE TERMINAL

