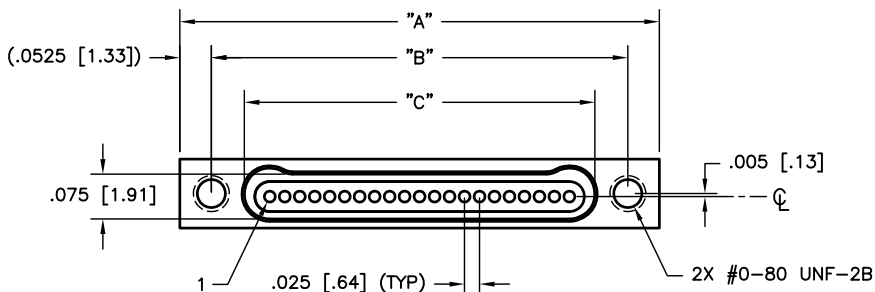


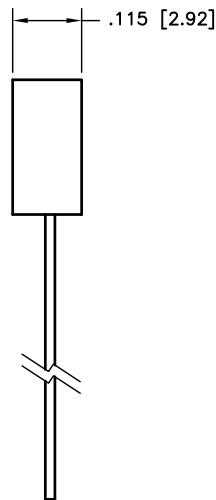
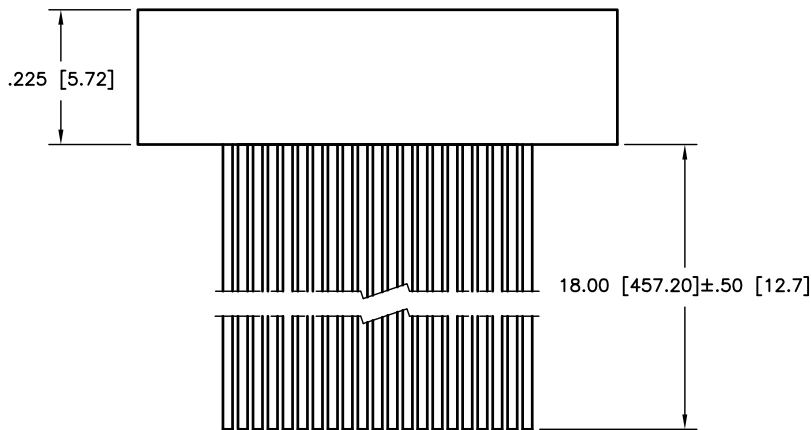
10 9 8 7 6 5 4 3 2

| PART REV | DWG ISSUE | DATE | ECN NO. | APPVD BY | REL BY |
|----------|-----------|------|---------|----------|--------|
| - | - | | | | |



WIRING COLOR CODE

| | | |
|-----------|---|--------|
| 1, 11, 21 | — | BLACK |
| 2, 12 | — | BROWN |
| 3, 13 | — | RED |
| 4, 14 | — | ORANGE |
| 5, 15 | — | YELLOW |
| 6, 16 | — | GREEN |
| 7, 17 | — | BLUE |
| 8, 18 | — | VIOLET |
| 9, 19 | — | GRAY |
| 10, 20 | — | WHITE |



| PART NO. | SIZE | "A" | "B" | "C" |
|-----------|------|---------------|---------------|---------------|
| 833211627 | 9 | .500 [12.70] | .395 [10.03] | .285 [7.24] |
| 833221627 | 15 | .650 [16.51] | .545 [13.84] | .435 [11.05] |
| 833231627 | 21 | .800 [20.32] | .695 [17.65] | .585 [14.86] |
| 833241627 | 25 | .900 [22.86] | .795 [20.19] | .685 [17.40] |
| 833251627 | 31 | 1.050 [26.67] | .945 [24.00] | .835 [21.21] |
| 833261627 | 37 | 1.200 [30.48] | 1.095 [27.81] | .985 [25.02] |
| 833271627 | 51 | 1.550 [39.37] | 1.445 [36.70] | 1.335 [33.91] |

3. PERFORMANCE: MEETS OR EXCEEDS M32139 PERFORMANCE SPECIFICATIONS
 CONTACT RATING: 1 AMPERE MAXIMUM
 INSULATION RESISTANCE: 5000 MEGOHMS MINIMUM @ 100 VDC
 CONTACT RESISTANCE: 0.071 VOLT MAXIMUM DROP @ 1.0 AMPS (.071 OHMS)
 W/6.00" OF WIRE LISTED BELOW, PER MIL-DTL-32139

2. MATERIALS: SHELL: ALUMINUM 6061-T6, ELECTROLESS NICKEL PLATED PER AMS-C-26074
 INSULATOR: LCP (LIQUID CRYSTAL POLYMER) GLCP-30F
 CONTACT: BRASS ALLOY 735, GOLD PLATED PER ASTM B488
 LEADS: 30 AWG, NEMA HP3, TYPE ET, COLOR CODED PER MIL-DTL-681, SYSTEM 1,
 EXCEPT USING 10 SOLID REPEATING COLORS, 18.0" +0.5/-0 LONG

1. MARKINGS: UMI, DATE CODE, UMI P/N AS SPACE PERMITS

NOTES: UNLESS OTHERWISE SPECIFIED

| | | | | |
|--|--|-----------------------------|--|---------------------|
| QUALITY SYMBOLS MAJOR = CRITICAL = SPC = | UNLESS SPECIFIED: ALL DIMENSIONS IN INCHES GENERAL TOLERANCES: 3 PLACE ±.005 2 PLACE ±.010 ANGULAR ±2° | SCALE 5:1 DWG SIZE B | THIRD ANGLE PROJECTION | REVISE ON CAD ONLY |
| | DRAWN BY & DATE UMI 03-09-10 | CHECKED BY & DATE | TITLE: NANO-D SINGLE ROW CONNECTOR FEMALE, SIZE XX, NMLXX-1S07-30F6-18.0 S01 | |
| | APPROVED BY & DATE | MATERIAL: | Ulti-Mate Connector Inc. | |
| | CAD FILENAME SD-833231627.DWG | PART NO. SEE "TAB BLOCK" | DRAWING NO. SD-833231627 | SHEET NO. 1 OF 1 |
| Ulti-Mate CAGE CODE 58967 | THIS DRAWING CONTAINS INFORMATION THAT IS PROPRIETARY TO ULTI-MATE INCORPORATED AND SHOULD NOT BE USED WITHOUT WRITTEN PERMISSION. | | | REV - |