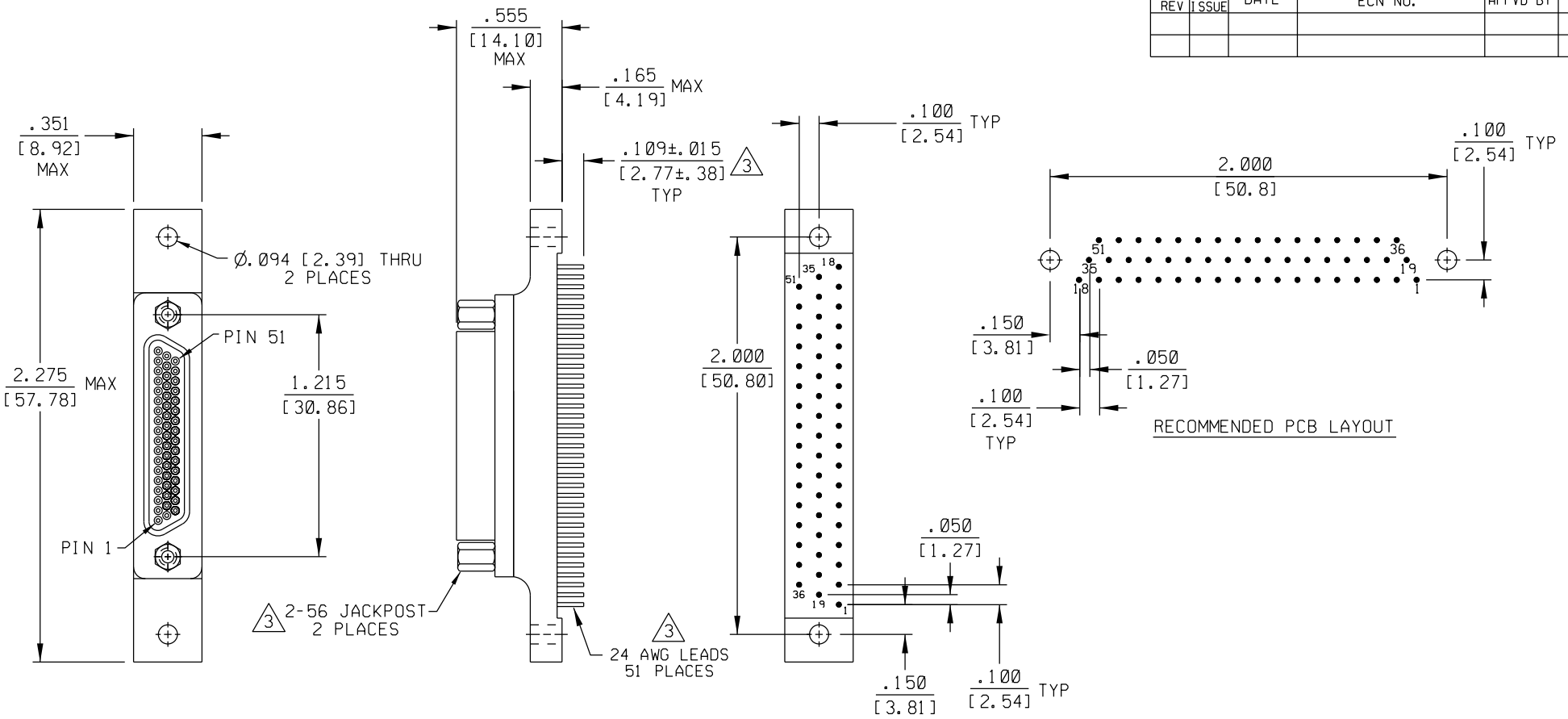


PART REV	DWG ISSUE	DATE	ECN NO.	APPVD BY	REL BY



4. PERFORMANCE: MEETS OR EXCEEDS REQUIREMENTS OF MIL-DTL-83513
- 3 CONSULT FACTORY FOR AVAILABLE OPTIONS.
- 2 MATERIALS:
 SHELL: 6061-T6 ALUMINUM PER SAE-AMS-00-A200/8, NICKEL PLATED PER AMS 2404
 INSULATOR AND BACKSHELL: PPS PER MIL-M-24519 GST-40F, COLOR: BLACK
 PIN CONTACTS: C17200 BERYLLIUM COPPER PER ASTM B194, GOLD PLATED PER ASTM B488
 24 AWG LEADS: TIN PLATED COPPER PER A-A-59551 TYPE S
 HARDWARE: PASSIVATED STAINLESS STEEL IAW MIL-DTL-83513/5
1. MARKING: "UMI", UMI DATE CODE, AND UMI PART NUMBER
- NOTES: UNLESS OTHERWISE SPECIFIED

QUALITY SYMBOLS MAJOR = CRITICAL = SPC =	UNLESS SPECIFIED: ALL DIMENSIONS IN INCHES/MM	SCALE 2:1	DWG SIZE B	THIRD ANGLE PROJECTION	REVISE ON CAD ONLY
	GENERAL TOLERANCES: 3 PLACE ± .005 / .13 2 PLACE ± .01 / .25 ANGULAR ± 2°	DRAWN BY & DATE DW 11-8-11	TITLE: CIRCUIT CONNECTOR, PLUG (PINS), SIZE 51-3, STYLE 4 (.100 X .100), CM4R51-3P07-S01		
	Ulti-Mate CAGE CODE 58967	CHECKED BY & DATE	MATERIAL: Ulti-Mate Connector Inc.		
		APPROVED BY & DATE	CAD FILENAME SD-8361 71 41 7. DGN	PART NO. 8361 71 41 7	DRAWING NO. SD-8361 71 41 7
			SHEET NO. 1 OF 1		
			THIS DRAWING CONTAINS INFORMATION THAT IS PROPRIETARY TO ULTI-MATE INCORPORATED AND SHOULD NOT BE USED WITHOUT WRITTEN PERMISSION.		
					REV