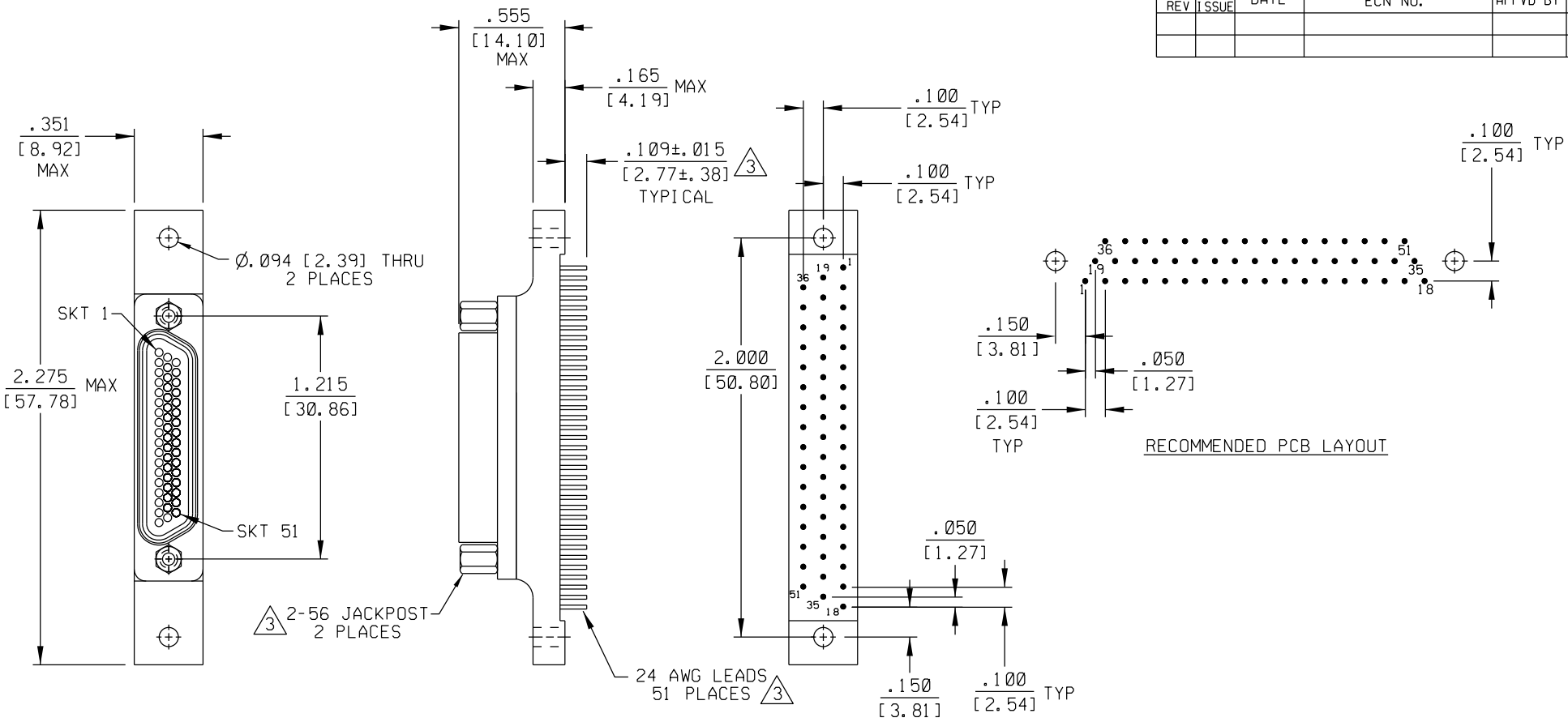


PART REV	DWG ISSUE	DATE	ECN NO.	APPVD BY	REL BY



- 4. PERFORMANCE: MEETS OR EXCEEDS REQUIREMENTS OF MIL-DTL-83513
  - 3 CONSULT FACTORY FOR AVAILABLE OPTIONS.
  - 2 MATERIALS:
    - SHELL: 6061-T6 ALUMINUM PER SAE-AMS-QQ-A200/8, NICKEL PLATED PER AMS 2404
    - INSULATOR AND BACKSHELL: PPS PER MIL-M-24519 GST-40F, COLOR: BLACK
    - SOCKET CONTACTS: C21000 BRASS ALLOY PER ASTM B36, GOLD PLATED PER ASTM B488
    - 24 AWG LEADS: TIN PLATED COPPER PER A-A-59551 TYPE S
    - HARDWARE: PASSIVATED STAINLESS STEEL IAW MIL-DTL-83513/5
    - INTERFACIAL SEAL: FLUOROSILICONE PER MIL-R-25988
  - 1. MARKING: "UMI", UMI DATE CODE, AND UMI PART NUMBER
- NOTES: UNLESS OTHERWISE SPECIFIED

<b>QUALITY SYMBOLS</b> MAJOR = CRITICAL = SPC =	UNLESS SPECIFIED: ALL DIMENSIONS IN INCHES/MM	SCALE 2:1	DWG SIZE B	THIRD ANGLE PROJECTION	REVISE ON CAD ONLY	
	GENERAL TOLERANCES: 3 PLACE ± .005 / .13 2 PLACE ± .01 / .25 ANGULAR ± 2°	DRAWN BY & DATE DW 11-8-11	TITLE: CIRCUIT CONNECTOR, RECEPT. (SKTS), SIZE 51-3, STYLE 4 (.100 X .100), CM4R51-3S07-S01			
	Ulti-Mate CAGE CODE <b>58967</b>	CHECKED BY & DATE	MATERIAL:   Ulti-Mate Connector Inc.			
		APPROVED BY & DATE	CAD FILENAME SD-836271 41 7. DGN	PART NO. 836271 41 7	DRAWING NO. SD-836271 41 7	SHEET NO. 1 OF 1
			THIS DRAWING CONTAINS INFORMATION THAT IS PROPRIETARY TO ULTI-MATE INCORPORATED AND SHOULD NOT BE USED WITHOUT WRITTEN PERMISSION.			