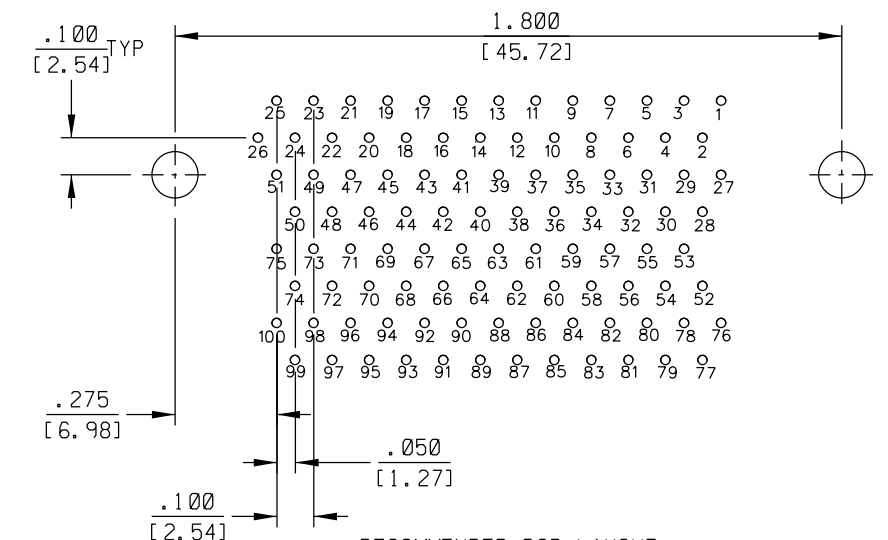
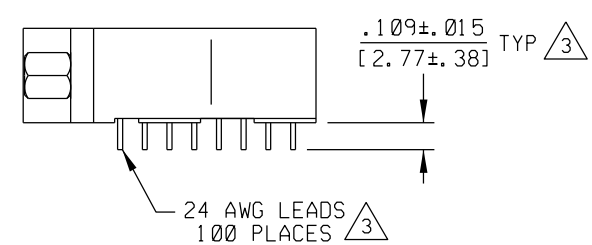
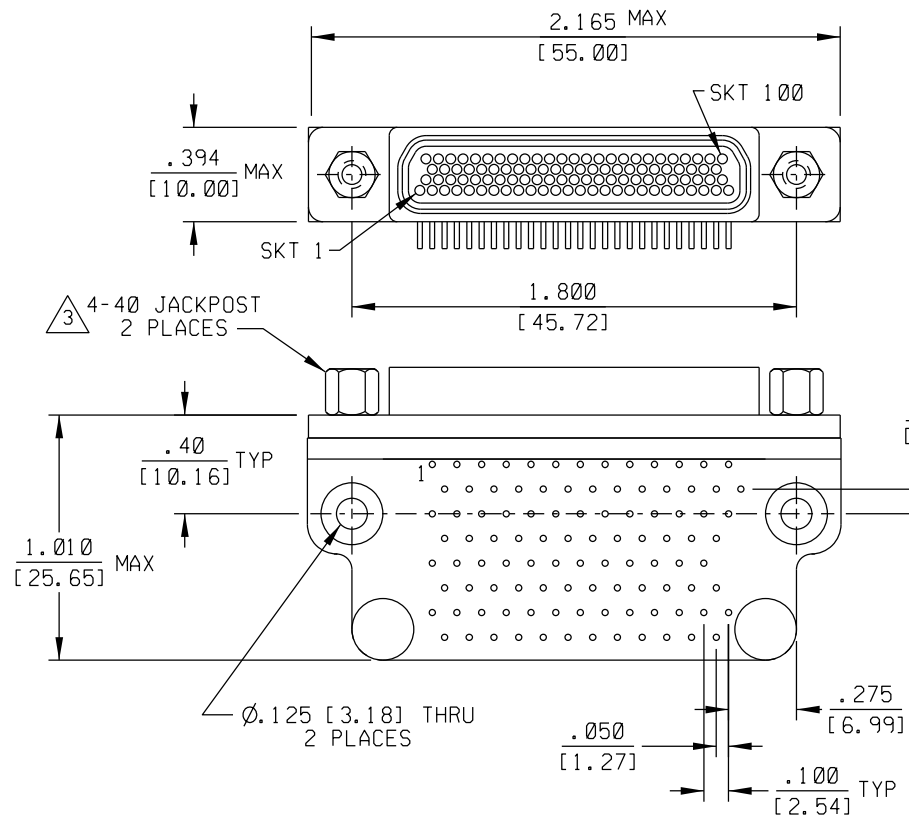


| PART REV | DWG ISSUE | DATE | ECN NO. | APPVD BY | REL BY |
|----------|-----------|------|---------|----------|--------|
| | | | | | |



RECOMMENDED PCB LAYOUT
SCALE 3:1

4. PERFORMANCE: MEETS OR EXCEEDS REQUIREMENTS OF MIL-DTL-83513

3 CONSULT FACTORY FOR AVAILABLE OPTIONS.

- 2 MATERIALS:
 SHELL: 6061-T6 ALUMINUM PER QQ-A200/8 NICKEL PLATED PER AMS2404
 INSULATOR AND BACKSHELL: PPS PER MIL-M-24519 GST-40F, COLOR: BLACK
 SOCKET CONTACTS: C21000 BERYLLIUM COPPER PER ASTM B36 GOLD PLATED PER ASTM B488
 24 AWG LEADS: TIN PLATED COPPER PER A-A-59551 TYPE S
 HARDWARE: PASSIVATED STAINLESS STEEL IAW MIL-DTL-83513/5
 INTERFACIAL SEAL: FLUOROSILICONE PER MIL-R 25988
 1 MARKING: "UMI", UMI PART NUMBER, AND UMI DATE CODE.

NOTES: UNLESS OTHERWISE SPECIFIED

| | | | | | |
|---|---|--|---|------------------------|-----------------------------|
| QUALITY SYMBOLS MAJOR CRITICAL SPC | UNLESS SPECIFIED: ALL DIMENSIONS IN INCHES/MM | SCALE 2:1 | DWG SIZE B | THIRD ANGLE PROJECTION | REVISE ON CAD ONLY |
| | GENERAL TOLERANCES: 3 PLACE ±.005/.13 2 PLACE ±.01/.25 ANGULAR ±2° | DRAWN BY & DATE DW 10-24-11 | TITLE: CIRCUIT CONNECTOR, RECEPT. (SKTS), SIZE 100, STYLE 1 (.100 X .100), CMR1R100S17-S01 | | |
| | Ulti-Mate CAGE CODE 58967 | CHECKED BY & DATE | MATERIAL: 2 3 Ulti-Mate Connector Inc. | | |
| | | APPROVED BY & DATE | CAD FILENAME SD-836281117.DGN | PART NO. 836281117 | DRAWING NO. SD-836281117 |
| | | THIS DRAWING CONTAINS INFORMATION THAT IS PROPRIETARY TO ULTI-MATE INCORPORATED AND SHOULD NOT BE USED WITHOUT WRITTEN PERMISSION. | | | |