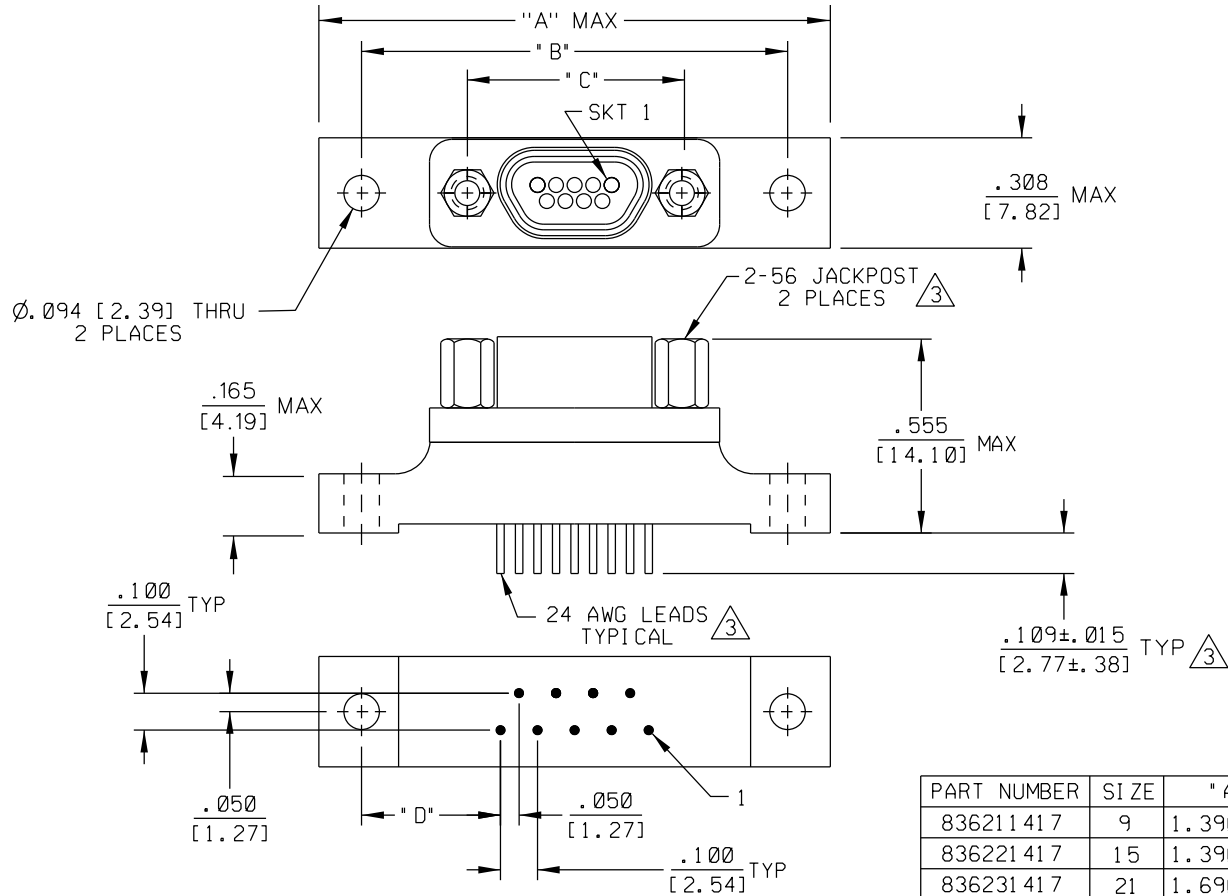


| | | | | | |
|----------|-----------|------|---------|----------|--------|
| PART REV | DWG ISSUE | DATE | ECN NO. | APPVD BY | REL BY |
| | | | | | |



| PART NUMBER | SIZE | "A" MAX | "B" | "C" | "D" |
|-------------|------|---------------|---------------|---------------|-------------|
| 836211 417 | 9 | 1.390 [35.31] | 1.150 [29.21] | .565 [14.35] | .375 [9.52] |
| 836221 417 | 15 | 1.390 [35.31] | 1.150 [29.21] | .715 [18.16] | .225 [5.72] |
| 836231 417 | 21 | 1.690 [42.93] | 1.450 [36.83] | .865 [21.97] | .225 [5.72] |
| 836241 417 | 25 | 1.740 [44.20] | 1.500 [38.1] | .965 [24.51] | .150 [3.81] |
| 836251 417 | 31 | 2.040 [51.82] | 1.800 [45.72] | 1.115 [28.32] | .150 [3.81] |
| 836261 417 | 37 | 2.340 [59.44] | 2.100 [53.34] | 1.265 [32.13] | .150 [3.81] |

- 5. SEE SHEET 2 FOR RECOMMENDED PCB LAYOUTS.
- 4. PERFORMANCE: MEETS OR EXCEEDS REQUIREMENTS OF MIL-DTL-83513
- 3 CONSULT FACTORY FOR AVAILABLE OPTIONS

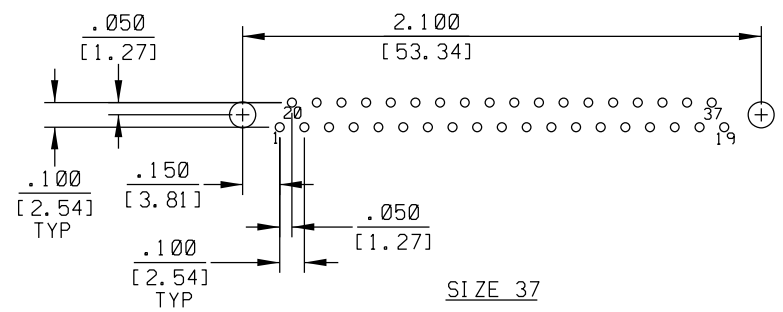
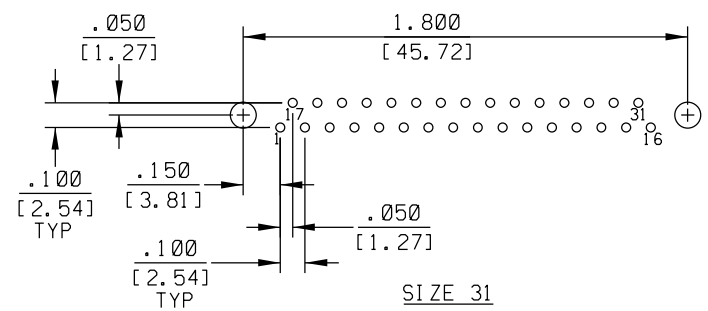
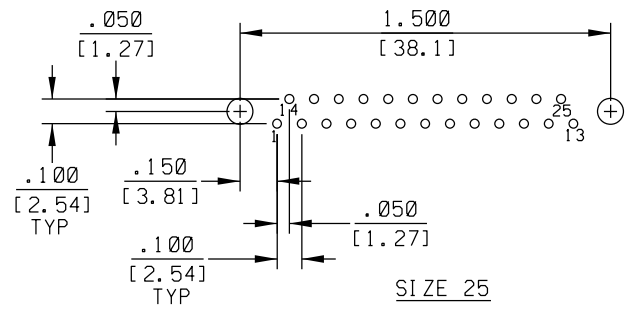
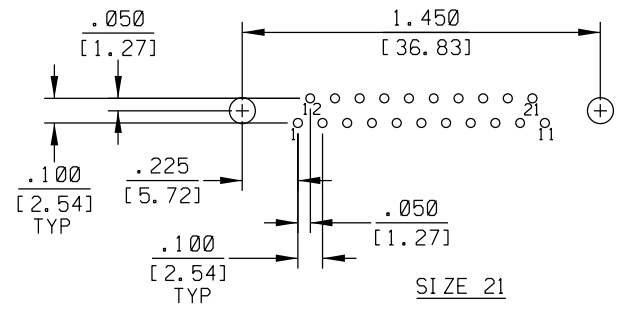
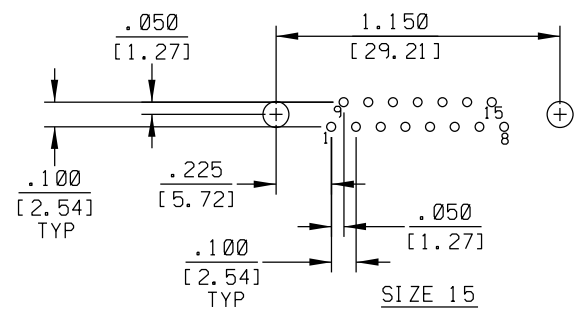
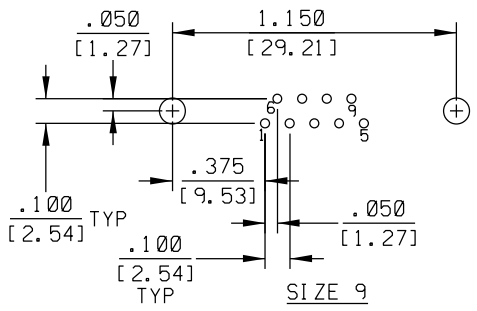
2 MATERIALS:
 SHELL: 6061-T6 ALUMINUM PER SAE-AMS-QQ-A200/8, NICKEL PLATED PER AMS 2404
 INSULATOR AND BACKSHELL: PPS PER MIL-M-24519 GST-40F, COLOR: BLACK
 SOCKET CONTACTS: C21000 BRASS ALLOY PER ASTM B36, GOLD PLATED PER ASTM B488
 24 AWG LEADS: TIN PLATED COPPER PER A-A-59551 TYPE S
 HARDWARE: PASSIVATED STAINLESS STEEL IAW MIL-DTL-83513/5
 INTERFACIAL SEAL: FLUOROSILICONE PER MIL-R-25988

1. MARKING: UMI, DATE CODE, UMI P/N.

NOTES: UNLESS OTHERWISE SPECIFIED.

| | | | | | |
|--|---|-------------------------------|--|------------------------|------------------------------|
| QUALITY SYMBOLS MAJOR CRITICAL SPC | UNLESS SPECIFIED: ALL DIMENSIONS IN INCHES/MM | SCALE 3 : 1 | DWG SIZE B | THIRD ANGLE PROJECTION | REVISE ON CAD ONLY |
| | GENERAL TOLERANCES: 3 PLACE $\pm .005$ / .13 2 PLACE $\pm .01$ / .25 ANGULAR $\pm 2^\circ$ | DRAWN BY & DATE DW 11-7-11 | TITLE: CIRCUIT CONNECTOR, RECEPTACLE (SKTS), STYLE 4, (.100 X .100) SIZES 9 THRU 37, CM4RXXS07-S01 | | |
| | | CHECKED BY & DATE | MATERIAL: 2 3 Ulti-Mate Connector Inc. | | |
| | | APPROVED BY & DATE | CAD FILENAME SD-8362X1 417-1.DGN | PART NO. SEE CHART | DRAWING NO. SD-8362X1 417 |
| | Ulti-Mate CAGE CODE 58967 | | | SHEET NO. 1 OF 2 | REV |
| THIS DRAWING CONTAINS INFORMATION THAT IS PROPRIETARY TO ULTI-MATE INCORPORATED AND SHOULD NOT BE USED WITHOUT WRITTEN PERMISSION. | | | | | |

| PART REV | DWG ISSUE | DATE | ECN NO. | APPVD BY | REL BY |
|----------|-----------|------|---------|----------|--------|
| | | | | | |



SEE SHEET 1

NOTES: UNLESS OTHERWISE SPECIFIED

| | | | | | |
|--|--|-------------------------------|---|---------------------------|-----------------------------|
| QUALITY SYMBOLS MAJOR CRITICAL SPC | UNLESS SPECIFIED: ALL DIMENSIONS IN INCHES/MM | SCALE 2:1 | DWG SIZE B | THIRD ANGLE PROJECTION | REVISE ON CAD ONLY |
| | GENERAL TOLERANCES: 3 PLACE ±.005/.13 2 PLACE ±.01/.25 ANGULAR ±2° | DRAWN BY & DATE DW 11-3-11 | TITLE: RECOMMENDED PCB LAYOUTS, CIRCUIT CONNECTOR, RECEPTACLE, STYLE 4 (.100 X .100), SIZES 9 THRU 37 | | |
| | Ulti-Mate CAGE CODE 58967 | CHECKED BY & DATE | MATERIAL: SEE SHEET 1 | | Ulti-Mate Connector Inc. |
| | THIS DRAWING CONTAINS INFORMATION THAT IS PROPRIETARY TO ULTI-MATE INCORPORATED AND SHOULD NOT BE USED WITHOUT WRITTEN PERMISSION. | APPROVED BY & DATE | CAD FILENAME SD-8362X1417-2.DGN | PART NO. SEE SHEET 1 | DRAWING NO. SD-8362X1417 |