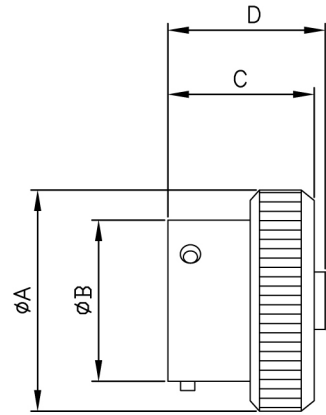
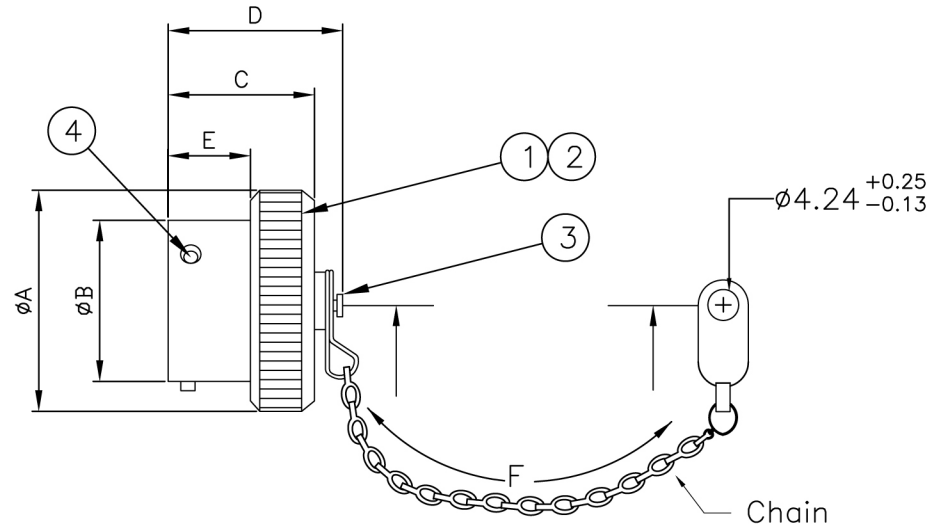


| REVISIONS LIST | | | | |
|----------------|-------|-----------------|------|-------|
| REV | ECO # | DESCRIPTION | DATE | APV'D |
| A | | Initial Release | | |



Style "A"

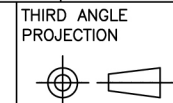


Style "C"

| Shell Size | ϕA MAX | ϕB $\begin{matrix} +0.03 \\ -0.13 \end{matrix}$ | C MAX | D MAX | E MIN | F $\begin{matrix} +12.7 \\ -6.35 \end{matrix}$ |
|------------|--------------|---|-------|-------|-------|--|
| 8 | 18.29 | 12.01 | 14.48 | 20.83 | 7.87 | 76.20 |
| 10 | 21.59 | 14.99 | 14.48 | 20.83 | 7.87 | 76.20 |
| 12 | 25.40 | 19.05 | 14.48 | 20.83 | 7.87 | 88.90 |
| 14 | 28.70 | 22.22 | 14.48 | 20.83 | 7.87 | 88.90 |
| 16 | 31.75 | 25.40 | 14.48 | 20.83 | 7.87 | 88.90 |
| 18 | 35.05 | 28.57 | 14.48 | 20.83 | 7.87 | 88.90 |
| 20 | 38.10 | 31.75 | 14.48 | 20.83 | 7.87 | 101.60 |
| 22 | 41.40 | 34.92 | 14.48 | 20.83 | 7.87 | 101.60 |
| 24 | 44.45 | 38.10 | 14.48 | 20.83 | 7.87 | 101.60 |

| No. | Name | Material/Finish | Remarks |
|-----|-------------|-----------------|---------|
| 1 | Shell | Aluminum | |
| 2 | Seal | Silicone Rubber | |
| 3 | Fastener | Stainless Steel | |
| 4 | Locking Pin | Stainless Steel | |
| | Chain | Stainless Steel | |

UNLESS NOTED TOLERANCES ARE:
.X ± 0.38
.XX ± 0.25
ANGLES ± 1°



1170 S. PATTON ST.
XENIA, OHIO 45385
PH: (937) 374-2700
FX: (937) 374-2717

| | | | | |
|---------------|----------------|---|--|--|
| UNIT: mm | DRWN: RLM | THESE DRAWINGS AND SPECIFICATIONS ARE THE PROPERTY OF SPI AND SHALL NOT BE COPIED, USED OR RE-PRODUCED WITHOUT PERMISSION. | TITLE 38999 Series II Plug Protective Cover | |
| SCALE: NTS | DATE: 01/24/13 | | S P I P / N : MS27510XXXXX | |
| | CHK'D: TRH | | R E V : A | |
| SHEET: 1 OF 1 | APV'D: TRH | | C U S T O M E R P / N : MS27510XXXXX | |